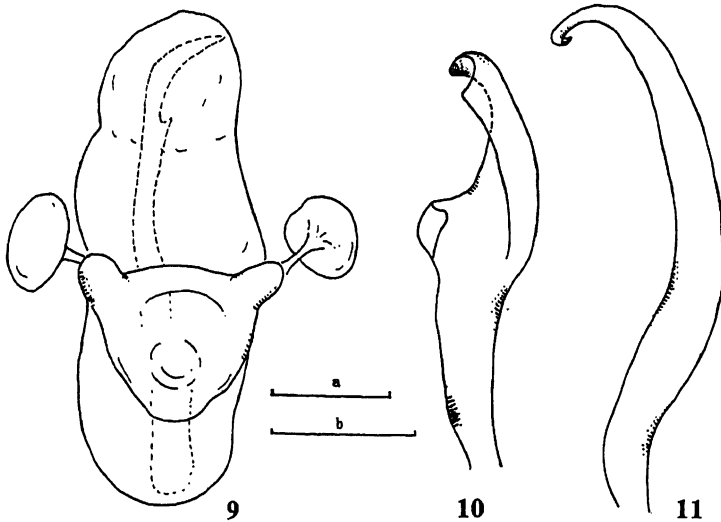


Holotype: ♂, P. R. CHINA: Xizang (=Tibet): Yadong (=Chomo, 27.4°N, 88.9°E), 2800m., 20.viii.1978, Coll. Fa-sheng Li (in Department of Plant Protection, Beijing Agricultural University, Beijing).

Distribution: P. R. China: Xizang.

Etymology: The new species is named after the type locality.



Figs. 9-11, *Latizanchius yadongensis*: 9, aedeagus; 10, right paramere; 11, left paramere. Scales: a=0.1mm (for Fig. 9); b=0.1mm (for Figs. 10, 11).

4. *Latizanchius zebrinus* Liu & Zheng, sp. nov. (Figs. 12-15)

Diagnostic characters: Related to *L. longicuneus* but with antennal segment I black ventrally, and with a wider, transverse, green band on the posterior half of corium.

Body oblong, light green, slightly shining, covered with long pale hairs and a few brown hairs. Head yellowish green, vertex flat, covered with fluffy pale hairs; postocular area tumid, with long straight hairs; eye almost orbiculate. Antennal segment I slightly shorter than head width, covered with dense, semierect, long, pale hairs, yellowish green dorsally, black ventrally and at base; segment II slender, yellowish brown, basally and apically blackish brown, length 2.7x segment I; color of segment III same as II, with base yellowish green. Rostrum reaching hind coxa. Pronotum shining, covered with long, erect, pale hairs, with sparse, long, brown hairs at lateral angles and posterior margin; anterior and lateral margins straight; posterior margin concave medially; calli slightly swollen; pronotal width 2.2x length, 1.33x head width, 0.63x antennal segment II. Scutellum pale green, covered with pale hairs, basal width as long as length. Hemelytra green, slightly shining, covered with semi-erect, pale hairs; embolium length 2.8x head width, 1.3x antennal segment II, 1.6x pronotal width; corium with a rather wide green