

- Subopaque. Length 2.25-2,5 mm. Eyes very small (Fig. 2 a-b), ocular index ($\sigma\eta$) 2,55-2.8. Caudolateral margin of pygofer (Fig. 2 c) close to left style with bluntly angular expansion. Styles and aedeagus shown in Fig. 2 d-f. On *Abutilon pannosum*. Distribution: Palestine, Sudan, Somalia, and Yemen ... *C. impicta* (Linnavuori, 1961)

***Orthocephalus modarresi* sp.n. (Orthotylinae, Halticini)**

(Fig. 3 a-g)

Material: Iran: Khorasan, 70 km W of Darreh Gaz, male holotype, female paratype, 14. 6. 1994; Khargh, 70 km SW of Qouchan, female paratype, 8-9. 6. 1994, Linnavuori; Tehran, Kandovan, alt. 2 550 m, male and two female paratypes, 3-4. 7. 1995, Linnavuori, in coll. Linnavuori.

Diagnosis: Shiny black. 1st antennal segment and basal part of 2nd yellow-brown. Femora and tibiae bright reddish,

Description: Length σ 4.75mm, η 4.0-4.25 mm. Shiny black. Vertex with small obscure pale spot near each eye. Eyes reddish. 1st antennal segment, except extreme base, and base (σ) or basal two thirds (η) of 2nd yellow-brown, rest of antennae black, in η base of 3rd segment pale. Hemelytra black, membranes uniformly blackish brown.

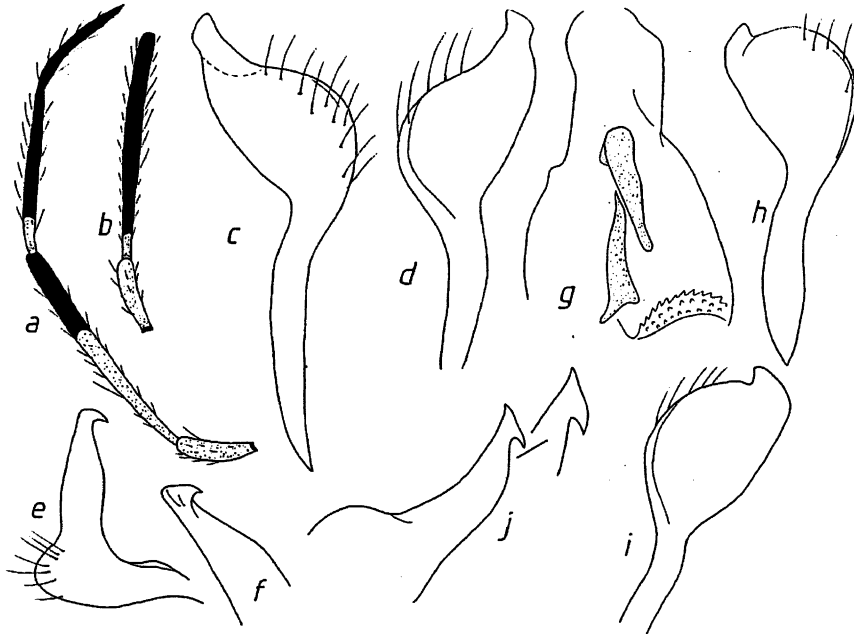


Fig. 3. *Orthocephalus modarresi* sp.n.: (a) female antenna; (b) male 1st and 2nd antennal segments; (c, d) right style; (e) left style; (f) hypophysis of left style; (g) spiculi of vesica in ventral view. *O. bivittatus* Fieber: (h, i) right style; (j) left style.