

***Lepidargyrus hafezi* sp.n.** (Fig. 8 A–F)

Types: Iran, Gilan, Sang Rud– Jirandeh, male holotype, 6 male and female paratypes, 25.VI.1996, Linnavuori, in coll. Linnavuori, paratypes also in College of Agriculture, University of Gilan, Rasht.

Description: Length ♂ 3.75–4.5 mm, ♀ 3.75 mm. Shiny. Grayish brown, female sometimes with reddish tinge. Head blackish with basal margin of vertex pale, in ♀ sometimes only tylus and genae black; eyes grayish brown. Antennae black. Scutellum grayish brown with basal angles and apex pale. Hemelytra grayish brown, cuneus usually reddish; membrane with veins dark brown. Under surface blackish. Legs yellow–brown, femora, in females especially, with reddish tinge. Tibial spines and tarsi black.

Body elongate (♂) or ovate (♀), 2.4–2.5 (♂) or 2.2–2.3 (♀) x as long as broad in middle of hemelytra. Upper surface with black semierect bristles and appressed silvery scales. Head (♂ ♀) 0.61–0.65 x as broad as basal width of pronotum; ocular index 1.80–1.92 (♂), 1.9–2.16 (♀). Proportions between antennal segments 14:54:34:23 (♀), 15:55:39:23 (♂), 2nd segment 1.06–1.16 (♂) or 1.02–1.07 (♀) x as long as diatone,

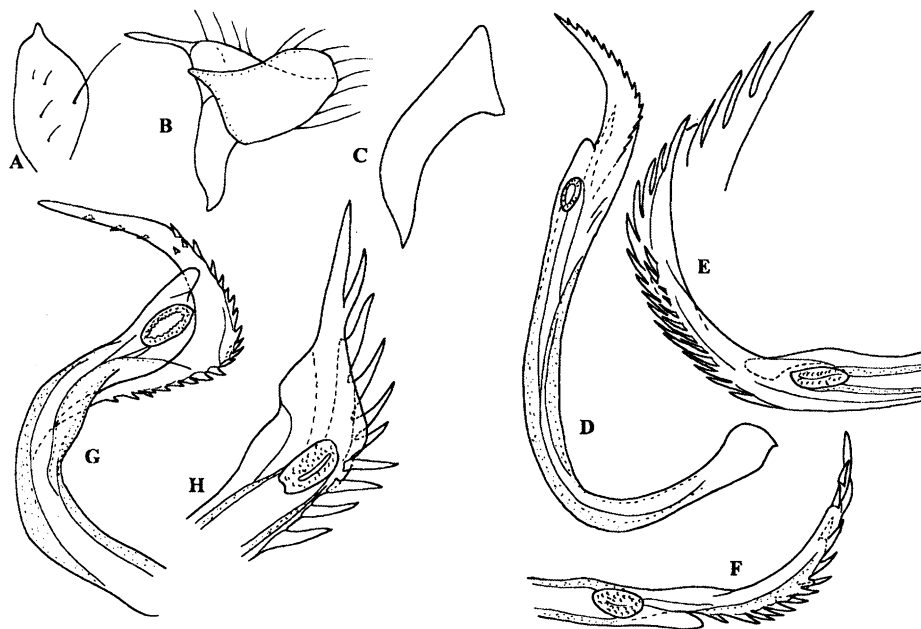


Fig. 8. *Lepidargyrus hafezi* sp.n.: (A) right style; (B) left style; (C) theca; (D) vesica (in glycerine); (E–F) apex of vesica (slide mount). – *L. iranicus* MUMINOV: (G) vesica (in slide mount) (ex from Khalkhal). – *L. seidenstueckeri* (WAGNER) (paratype): (H) apex of vesica.