

*Systellonotus pseudovelox* sp. n. (Fig. 1)

Typical material: Cyprus, Mari, 1.V.97, 1/0 (holotype), leg. and coll. A. Carapezza.

*Description of the holotype.* Macropterous, moderately shiny, 4.8 mm long. Body elongate, 4.8 x longer than basal width of pronotum. Head 0.69 x as broad as basal width of pronotum, in dorsal view 1.40 x as broad as long, in lateral view 0.85 x as long as high, in frontal view 1.12 x as broad as high; frons with raised, microsculptured lateral arcs. Ocular index 1.3. Length of antennal joints: 0.40-1.51-1.32-0.93 mm; 2nd joint 2.06 x as long as width of head, and 1.43 x as long as basal width of pronotum; 3rd joint 1.26 x as long as basal width of pronotum. Rostrum extending to hind coxae. Pronotum convex, strongly diverging caudad; basal width 2.95 x than width of pronotal collar; pronotal surface slightly uneven and moderately shining, area of calli and dorsal surface of collar minutely granulose. Scutellum moderately swollen; furrow separating mesoscutum from scutellum shallow. Hemelytra extending past apex of abdomen; length of hemelytron 3.67 mm. Lateral

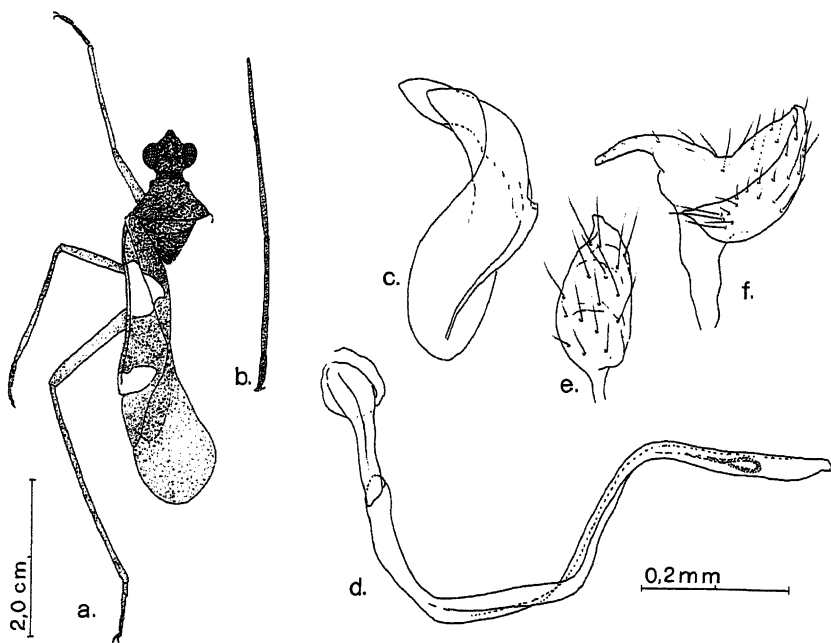


Fig. 1 - *Systellonotus pseudovelox* sp. n.: a. habitus in dorsal view; b. antenna; c. theca; d. vesica; e. right paramere; f. left paramere.