

and by the structure of the male genitalia (aedeagus); from *Diaphnidia* Uhler, 1895, the genus in which the species was originally placed by Van Duzee (1933), it differs by the presence of the sclerotized areola of membrane, by the much shorter cuneus, and by the eyes being placed at the middle of head; from *Paraproba* Distant, 1883, it differs by the presence of the sclerotized areola of membrane, by the shorter cuneus and by the structure of aedeagus.

17. *Galapagocoris crockeri* (Van Duzee), new combination.

(Figures 28, 29.)

*Diaphnidia crockeri* VAN DUZEE, 1933, Proc. Calif. Acad. Sci., ser. 4, vol. 21, no. 4, p. 29.

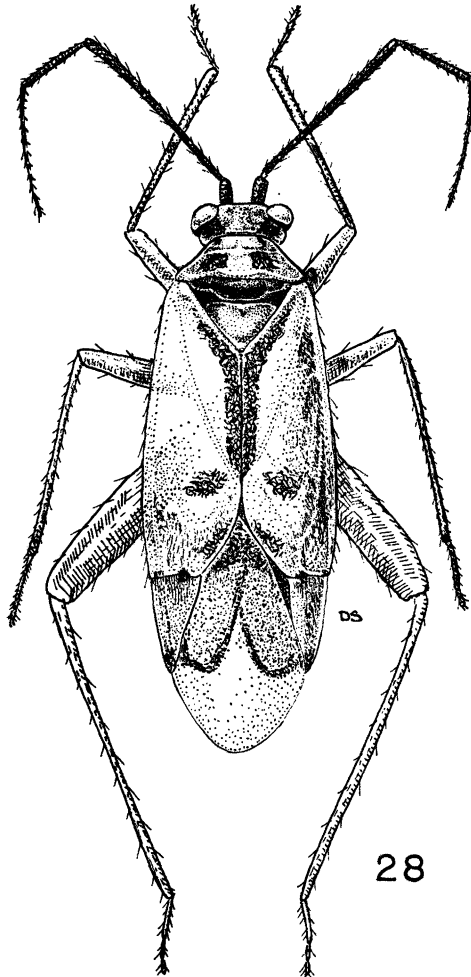


FIGURE 28. *Galapagocoris crockeri* (Van Duzee), new combination. Male.