

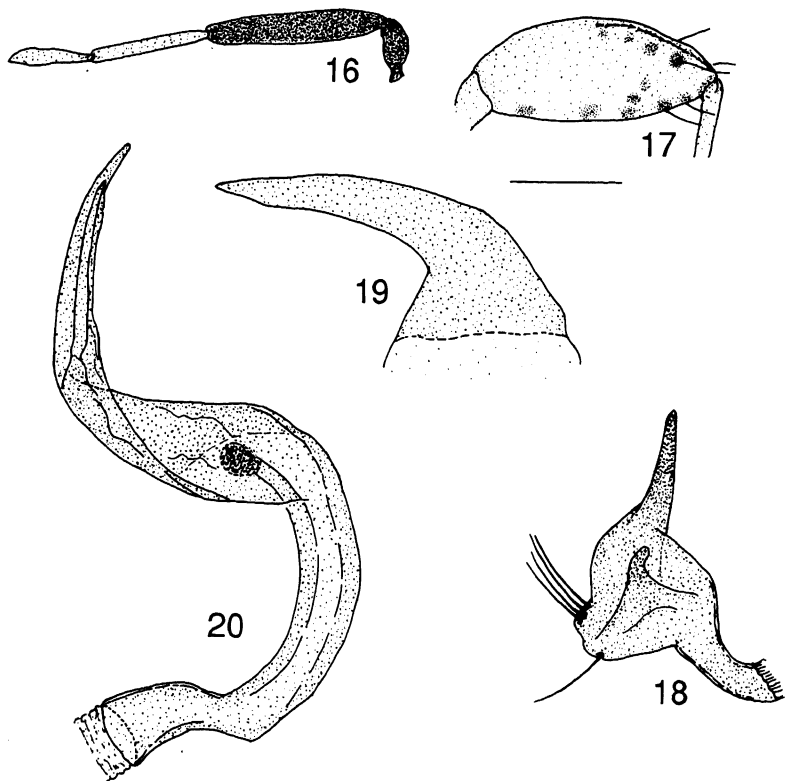
on the dorsal surface of the hind femur (all species of *Campylomma sensu* Schuh 1984 possess these spicules). However it has vesica typical of *Campylomma*. The species has a thumb-like process on the pygophore, a character which all species of the *livida*-group possess (Schuh 1984).

### *Campylomma fusciantennata* sp.n. (Figs 16-21)

**Types**—QUEENSLAND: holotype ♂, Cairns district, A. M. Lea, attracted to light, in SAM; *paratypes*: 3 ♀, same data as holotype, in SAM. NORTHERN TERRITORY: 1 ♂, Wildman River cashew plantation, 2.viii.1990, W. Houston, Malaise 1 a.m., in VAIC; 2 ♀, Eldo, 8 ml [ca 13 km] S of Gove Airport, 12.16.i.1971, T. Weir and A. Allwood, in NTDPF.

### Description

**Colouration**—Generally pale green to pale yellow; distal end of labium, 1st and 2nd antennal segments uniformly in ♂, 1st and proximal area of 2nd antennal segments in ♀, and femoral spots and tibial spurs, fuscous or black.



FIGS 16-20—*Campylomma fusciantennata* paratype ♂: (16) antenna; (17) hind femur; (18) right paramere; (19) phallosome; (20) vesica. Scale = 0.25 mm for 16; 0.10 mm for 17; 0.05 mm for 18-20.

Measurements are of holotype ♂ first, followed by those of ranges of 3 paratype ♀ in parentheses.

**Body**—General shape as in *C. liebkechti*. Dorsum shiny, body and appendages covered with shiny, golden yellow reclining setae and scales. Total length 2.00 (1.80-2.00). Apex tylus-cuneal fracture 1.42 (1.22-1.50).

**Head**—Globose, height 0.36 (0.33-0.34), width 0.57 (0.52-0.55), interocular space 0.23 (0.20-0.25). Eyes large as in *C. austrina*, in side view occupying entire length of head. Antenna with 1st segment narrow at proximal end, slightly extending beyond clypeus; 2nd segment narrow at proximal end, almost uniformly incrassate throughout; 1st and 2nd segments distinctly more incrassate than 3rd and 4th segments in ♂ (Fig. 16), only 1st segment distinctly more incrassate than distal 3 segments in ♀; 3rd and 4th slender, 2nd segment ca  $1\frac{1}{2}$ x as long as 3rd and ca 2x as long as 4th, length 2nd segment 0.53 (0.43-0.51). Labium slightly exceeding hind coxae, 1st segment thickest.

**Thorax**—Length pronotum 0.34 (0.32-0.39); maximum width pronotum 0.75 (0.69-0.80). Hind femur dorsally with row of dark spicules as in *C. liebkechti* (Fig. 17).