

Fig. 1. *Compsannanus puncticornis* Reuter. a–b: male and female antenna; c–f: male and female head and pronotum in dorsal view and head in apical view. — *C. longicornis* Wagner. g: male antenna; h: male head and pronotum, dorsal view; i–j: male head in apical and lateral view. — *C. maculicornis* (Linnavuori). k: male head and pronotum, dorsal view; l: male head, lateral view; m: claw; n: right style; o–p: left style; q: theca; r: vesica. — After Wagner 1971 and Linnavuori 1986.

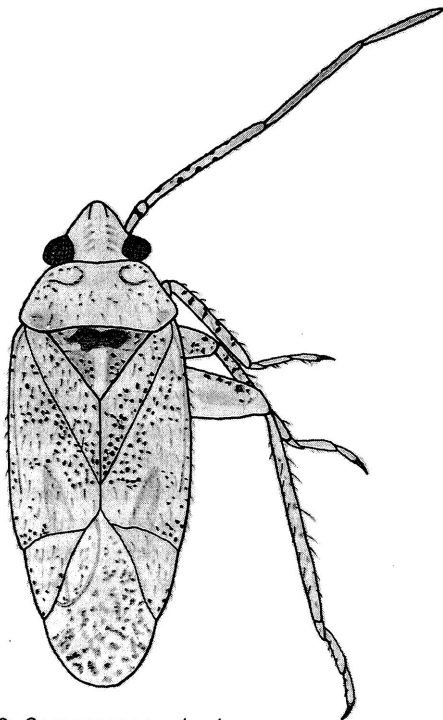


Fig. 2. *Compsannanus hesione* sp. n.

***C. maculicornis* (Linnavuori), comb. n.**

Figs. 1a–g, 3o

Compsidolon maculicorne Linnavuori 1986:171–173.

Types studied: Saudi Arabia, Hufuf, male holotype; 2 male paratypes, 8–23.IV.1978, Linnavuori, in coll. Linnavuori.

Material studied: Oman, 1♂ without a locality label, in coll. Linnavuori.

Diagnosis: Like *C. ovatus*, but scutellum and elytra with distinct fuscous dotting. Vesica without apical process.

Length 3.0 mm. Opaque. Whitish. Frons with faint fulvous lateral arcs. Eyes reddish gray. Antennae whitish ochraceous, 1st joint with transverse fuscous subapical spot on upper surface, 2nd with minute fuscous spots, 3rd and 4th joints slightly embrowned. Pronotum with calli a little infumed, anterior margin in front of calli with a few dark brown spots, lateral margins behind calli