

Fig. 18. *Tuponia subannulata* Wagner: a) vesica (specimen from Daragodleh, Somalia). — *T. kermanensis* Wagner: b) vesica. — *T. alhagicola shamash* Linnavuori: c–e) same.

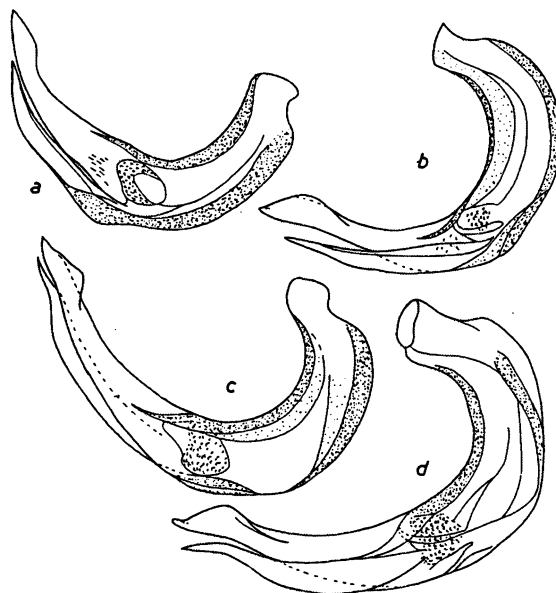


Fig. 19. *Aphaenophyes richteri richteri* (Wagner): a–b) vesica (specimens from As Salman, Iraq and Najran, Saudi Arabia). — *A. richteri elongata* Linnavuori: c–d) vesica of two specimens.

**\**Tuponia subannulata* Wagner**

*Tuponia subannulata* Wagner, 1973:147–148.

*Anonychiella abendica* Linnavuori, 1975b:102–103, *syn.n.*

Material: South Yemen: Sheikh Othman-Lahej, 9–15.VII.1963, Linnavuori, 3 exx. (LC).

Vesica of *T. subannulata* and of the related species of *T. kermanensis* Wagner 1958 (*syn. T. nana* Wagner 1960) and *T. alhagicola shamash* Linnavuori 1984 in Figs. 17c–f, 18a–e.

Biology: On halophytes such as *Salsola battae*.

Range: Eremian, known from Algeria, the Sudan, Somalia, and Jordan.

***Aphaenophyes richteri elongata* Linnavuori**

*Aphaenophyes richteri elongata* Linnavuori, 1975a:113.

Vesica in Fig. 19c–d, that of the nominate form *A. richteri richteri* (Wagner, 1957) in Fig. 19a–b.

Material: Yemen: San'a, holotype and 3 paratypes (LC); San'a, 12.I.1938, Scott & Britton, many exx. (BM).

Range: Endemic. The nominate form Eremian.

**\**Eurycranella geocoriceps* Reuter**

*Eurycranella geocoriceps* Reuter, 1904:26.

Material: Yemen: Wadi Dhahr near San'a, 28.I.1938, Scott & Britton, many exx.; — South Yemen: Jebel Harir, 27.X.1937, some exx.; Al Huseini near Lahej, 26.XI.1937, Scott & Britton, 1 ex.; Lahej-Dhala road, 13–14.VII.1963, Linnavuori, 1 ex. (BM, LC).

Biology: On *Tamarix*.

Range: Eremian.

**\**Eurycranella nupta* (Linnavuori)**

*Tuponia nupta* Linnavuori, 1961:26.

Material: South Yemen: Lahej-Dhala road, 13–14.VII.1963, 1 ex.; Sheikh Othman-Lahej, 9–15.VII.1963, Linnavuori, 2 exx. (LC).

Biology: On *Tamarix*.

Range: Eremian.