

Fig. 10. — *Macrotylus hymenocratii* Puchkov.: a–b) claw (in a pseudarolium in broad aspect); c) right style; d–f) left style in different views; g) theca.

Macrotylus hymenocratii Puchkov

Figs. 10a–g, 11a, 12a–c.

Macrotylus hymenocratii Puchkov, 1974: 78–79.

Length ♂ 4.25–4.75 mm, ♀ 4.5 mm. Shiny. Pale yellowish green. Eyes brown. Antennae yellow-brown or greenish, 1st, 3rd and 4th joints sometimes slightly embrowned. Membrane brownish hyaline, small pale spot at tip of cuneus, veins pale. Legs pale yellow-brown, femora with faint brown dots; tarsi dark.

♂ narrow, parallel-sided, ♀ broader. Hair covering black. Head slightly broader than long; eyes large, ocular index 1.33–1.38 (♂), 1.76 (♀). Antennae long and gracile, proportions between joints 9:30:20:10 (diatone 18 units) in ♂, 9:29:17:11 (diatone 18.5) in ♀; 2nd joint 1.70–1.83 (♂) or 1.60 (♀) x as long as diatone, 3rd joint 0.7 (♂) or 0.6 (♀) x as long as 2nd. Rostrum extending beyond hind coxae. Pronotum 1.9–2.1 x as broad as long in middle, lateral margins in ♂ distinctly, in ♀ slightly insinuated. Elytra and flying wings much longer than abdomen. Legs gracile. 3rd joint of hind tarsus dis-

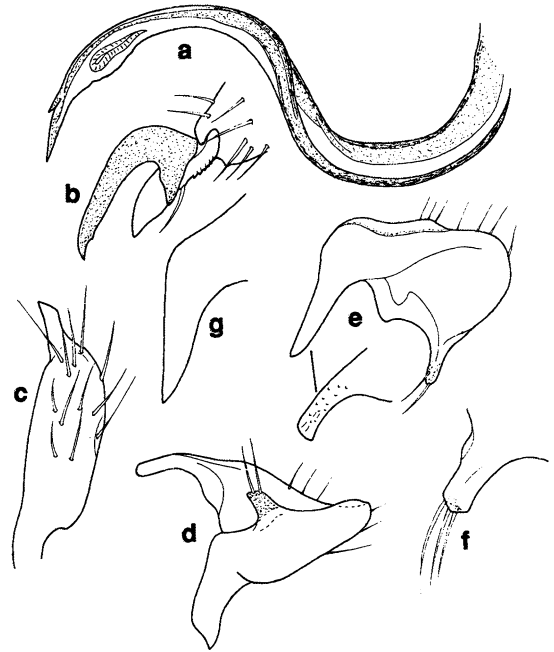


Fig. 11. — *Macrotylus hymenocratii* Puchkov.: a) vesica. — *M. breviostris* (Wagner): b) claw; c) right style; d–e) left style in different views; f) sensory lobe of same; g) theca.

tinctly shorter than 2nd, proportions between segments 9:15:12. Claw in Figs. 10a–b, 12c.

Male genitalia in Figs. 10c–g, 11a. Subapical process of vesica claw-like.

Biology: On *Hymenocrates bituminosa* Fisch. & Mey. (Labiatae).

Range: Turkestan.

Material studied: U.S.S.R.: Turkmenia, Kara-Kala (type locality), 5 exx, 29.IV.1973, 15.V.1974, V.G. Puchkov, in coll. Linnavuori.

Macrotylus breviostris (Wagner), comb. nov.

Figs. 6h, 11b–g, 13a.

Pronototropis (Jafara) breviostris Wagner 1971:35–37.

Length ♂ 5.6–5.8 mm, ♀ 4.6–4.8 mm. Opaque. Pale grayish green. Eyes pale grayish brown. Antennae whitish ochraceous. Clavus and corium with faint brown dots; membrane pale smoky, veins pale. Legs whitish ochraceous, femora with faint brownish dots, tarsi dark.