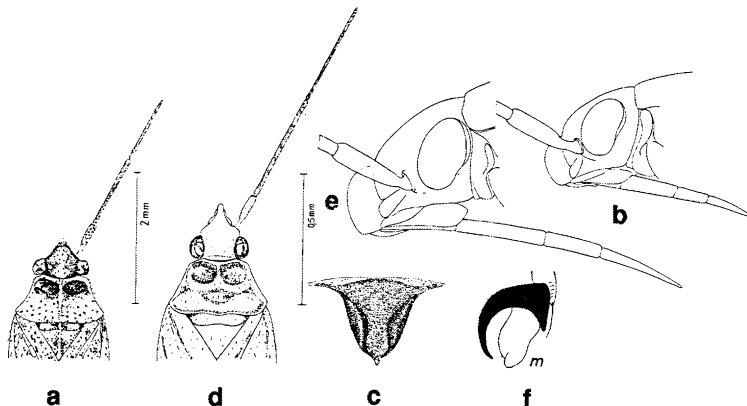


Fig. 1. — *Pronototropis punctipennis* (Fieber): a) head and pronotum (♂); b) head in profile; c) prosternal xyphus. — *Pleuroxonotus longicornis* (Reuter): d) head and pronotum (♀); e) head from side. — *Macrotylus dentifer* Wagner: f) claw. — After Seidenstücker 1962, Wagner 1969.



Body long and narrow, 4.5 (♂) or 4.0 (♀) × as long as basal width of pronotum. Eyes large, ocular index 1.13–1.2 (♂), 1.78–1.85 (♀). Antennae long and gracile, proportions between segments 11:43:36:13 (♂), 12:44:30:?? (♀); 2nd joint 1.40–1.95 (♂) or 1.76–1.95 (♀) × as long as diatone, 1.23–1.30 (♂) or 1.02–1.15 (♀) × as long as basal width of pronotum. Rostrum extending to middle coxae. Lateral margins of pronotum straight, sharp, in ♂ narrowly, in ♀ more broadly lamellate. Legs long, hind femur 1.5 (♂) or 1.25 (♀), hind tibia 2.45 (♂) or 2.0 (♀) × as long as basal width of pronotum. 3rd hind tarsomere (Fig. 6f) slightly shorter than 2nd, proportions between joints 10:26:25. Claw in Fig. 2j.

Male genitalia in Fig. 3e–h.

Biology: in Libya found on *Launea resedifolia* D.K.

Range: South Mediterranean (Morocco–Israel). The records mentioned in Linnavuori 1971: 135 are not repeated here.

Pleuroxonotus nasutus Reuter

Figs. 2 g, 4a–f, 6a

Pleuroxonotus nasutus Reuter 1904: 7–9.

Length ♂ 6.5 mm, ♀ 6.5–7 mm. Pale green or yellowish. Eyes grayish brown. Antennae with 3rd and 4th joints and apex of 2nd slightly embrowned. Elytra with trace of longitudinal brownish band on mesocorium; membrane brownish hyaline with distinct pale median band, veins pale. Legs yellowish.

Resembling *P. longicornis*, but body shorter and broader, 3.6–3.7 × as long as broad at base of pronotum. Eyes smaller, ocular index 1.53 (♂) or 2.0 (♀). Antennae shorter, proportions between joints 12:39:31:10 (diatone 24 units) in ♂, 12:35:28:12

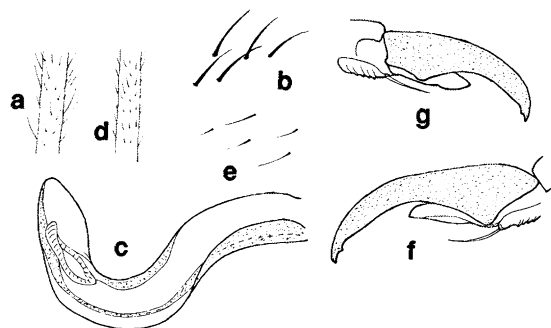


Fig. 2. — *Pronototropis punctipennis* (Fieber): a) hair covering of 2nd antennal segment; b) same of elytron; c) vesica. — *Pleuroxonotus longicornis* (Reuter): d) hair covering of 2nd antennal segment; e) same of elytron; f) claw. — *P. nasutus* Reuter: g) claw.

(diatone 26.5) in ♀; 2nd segment 1.63 (♂) or 1.35–1.46 (♀) × as long as diatone, 1.0 (♂) or 0.8–0.9 (♀) × as long as basal width of pronotum. Rostrum extending to apex of mesonotum. Lateral margins of pronotum slightly insinuated or nearly straight, distinctly (in ♂ narrowly, in ♀ broadly) lamellate and upcurved. Legs shorter, hind femur 1.4 (♂) or 1.1 (♀), hind tibia 1.85 (♂) or 1.6 (♀) × as long as basal width of pronotum. 3rd joint of hind tarsus longer than 2nd, proportions between joints 11:20:22. Claw in Fig. 2g.

Male genitalia (Fig. 4b–f) much as in the preceding species.

Range: Turkestan.

Material studied: USSR: Turkestan, Aschabad, 2 exx, Ahnger; Turkmenskaja SSR, Kazandžikskii r. pos. Ahča-Kuima, 2 exx, 8.V.1974, V. Puchkov, in coll. Linnavuori.