

2nd joint $1.37 \times$ as long as basal width of pronotum. Pronotum cylindrical, lateral margins slightly insinuated before basal angles. Elytra very short, concealing only the base of abdomen. Abdomen strongly expanded. Rostrum extending to hind coxae. Male genitalia: Right stylus (Fig. 19 d) ovate and sharp-tipped. Left stylus (Fig. 19 e) high, strongly sloping mesad. Theca (Fig. 19 e) thick, bearing 2 pairs of teeth. Vesica (Fig. 19 f) long and slender. Material studied: Iran, Schachrud, 1 ♂ and 2 ♀, Kiritschenko.

Hypomimus Ldb.

H. nocturnus sp. n.

♂ 3.6 mm. Dark coffee-brown. Elytra with whitish pattern as in Fig. 11 g; membrane dark.

Slender. With long erect light hairs on upper surface. Vertex $1.5 \times$ as broad as eye, microsculptured, base only very faintly margined. Antennae relatively slender, proportions between the joints 6 : 29 : 21 : 15, 2nd joint $1.1 \times$ as long as basal width of pronotum. Pronotum strongly expanded caudad, relatively shining, distinctly microsculptured. Scutellar hump prominent. Rostrum extending to middle coxae.

Sudan, Erkwit, 1 ♂ type, 5. - 10. VII. 1961. At lamp.

H. secundus Lv. is smaller, with shorter antennae, the whitish band on elytra is not broken, etc.

Orthotyplus Fb.

O. priesneri Schm. - Assiut, many, 30. - 31. VII. 1961; Dakhla, 2 spec., 20. - 21. IX. 1962; Kharga, 1 spec., 19. - 22. IX. 1962; Luxor, many, 26. - 28. VII. 1961. Common on *Acacia* and at lamps.

O. minutus Jak. - Cairo, 1 spec., 10. - 19. IV. 1961. At lamp.

O. pusillus Rt. - Fayoum, some, 13. - 14. VI. 1961. From halophytes on the shore of a salt lake.

O. haloxytoni E. Wgn. - Cairo - Suez desert road, some, 14. - 15. IX. 1962; Sinai, Wadi Feiran, some, 25. - 29. IX. 1962. On *Haloxyton salicornicum*.

Zanchius Dist.

Zanchius DISTANT 1904. Type: *Z. annulatus* Dist.

Habrocoris E. WAGNER 1951, p. 153. Type: *H. breviceps* E. Wgn., syn. n.

Z. breviceps (E. Wgn.)

Claw as in Fig. 19 k. Right stylus (Fig. 19 g) small. Left stylus (Fig. 19 h-i) with a curvate, slender hypophysis. Vesica with short teeth bearing lobes as in *Z. alatanus* Hob., moreover a falcate spiculum (Fig. 19 j) is to be found.

Assiut, 3 spec., 30. - 31. VII. 1961; Luxor, 2 spec., 26. - 28. VII. 1961. At lamps.

Platycranus Fb.

P. putoni Rt. - Cairo - Suez desert road, some, 14. - 15. IX. 1962. On *Retama raetam*.

Nasocoris Rt.

N. albipennis Ldb. - Sinai, Wadi Feiran, some, 25. - 29. IX. 1962. On *Ephedra alata*.

Hadrophyes Pt.

H. decipiens sp. n.

3 - 3.2 mm. As *H. sulphurella* Pt., but 1) smaller and more gracile, 2) eyes larger, vertex $1.38 - 1.47$ (♂) or 1.7 (♀) \times as broad as eye (in *sulphurella* ♂ $1.73 \times$), 3) 2nd antennal

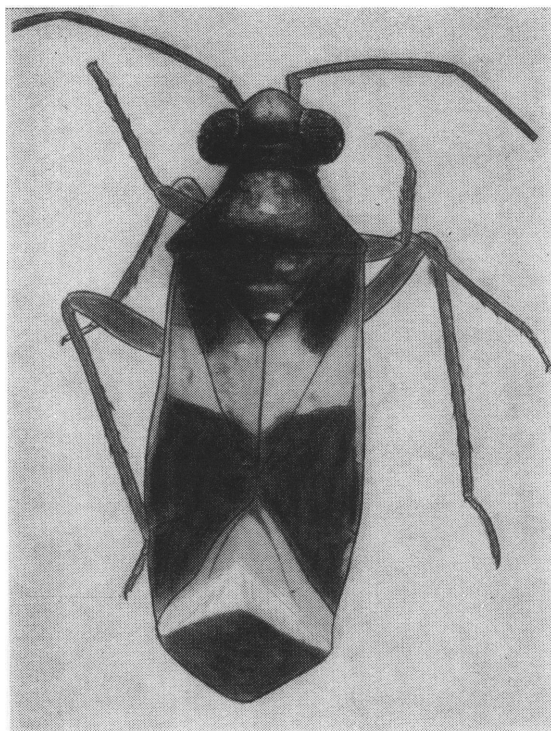


Fig. 17. *Trachelonotus kiritshenkoi* (Pop.) ♂.

joint shorter, as long as (♂) or shorter than (♀) the basal width of pronotum (in *H. sulphurella* ♂ distinctly longer), and 4) with different genitalia: Right stylus (Fig. 20 d) small, bearing a short, sharp apex. Left stylus (Fig. 20 e-f): sensory lobe with a short tooth, hypophysis slender, recurved ventrad apically. Theca (Fig. 20 g) digitate. Vesica (Fig. 20 b-c) not expanded apically, apex bearing a minutely serrate ridge and a short subapical claw. In *H. sulphurella* the vesica (Fig. 20 a) is shorter and thicker and strongly expanded apically.

Sokhna, 1 ♂ (type), many paratypes, 15. IX. 1962. On *Suaeda* sp. in a salt marsh.

Megalocoleus Rt.

M. chrysostrichus (Fb.) - Siwa (HOBERLANDT *op. cit.*, p. 368).

Camptotyplus Fb.

C. yersini (M.R.) - Cairo, some, 10. - 19. VI. 1961. On *Tamarix*.

Macrotlyplus Fb.

M. atricapillus (Sc.) - Sinai, Wadi Feiran, some, 25. - 29. IX. 1962. Swept from desert vegetation. New to Egypt. Holomediterranean.

Ectagela Schm.

E. guttata Schm. - Luxor, 2 spec., 26. - 28. VII. 1961. At lamp.