

Urapura n. gen.

Orthotylinae, Orthotylini. General fascies of *Pseudoloxops* Kirkaldy, 1905, body smooth, pubescence short and semiadpressed, size small.

Head semihorizontal, pointed in front, vertex smooth, hind margin straight, eyes elongate, contiguous with pronotum, clypeus flat, jugum, lorum, gena and gula very small; rostrum short, reaching slightly beyond apex of coxae I, segment I nor reaching xyphus of prosternum; antenna with segment I very short, thick, globose, segment II twice as long as first, also thick, cylindrical, narrowed at middle; segments III and IV very short, slender, pubescence short.

Pronotum flat, lateral margins somewhat carinate, calli flat, collar not visible from above, hind margin convex; mesoscutum largely exposed, scutellum flat.

Hemelytra with very narrow embolium, cuneus slightly longer than wide at base; membrane biareolate.

Underside of body with distinct ostiolar peritreme, femora III large, tibiae with pale spines.

Type species of genus: *Urapura antennata* n. sp.

Differs from *Pseudoloxops* Kirkaldy, 1905 by the morphology of the antenna and very small size.

Urapura antennata n. sp.
(Fig. 26)

Characterized by its coloration.

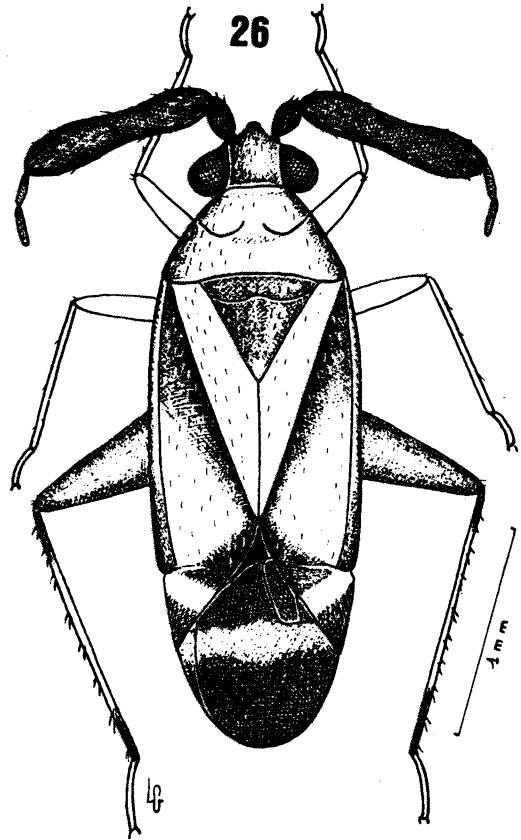
Female: Length 2.6 mm, width 0.9 mm. *Head*: Length 0.2 mm, width 0.5 mm, vertex 0.28 mm. *Antenna*: Segment I, length 0.14 mm; II, 0.8 (thickest portion 0.14) mm; III, 0.14 mm; IV, 0.14 mm. *Pronotum*: Length 0.4 mm, width at base 0.7 mm. *Cuneus*: Length 0.34 mm, width at base 0.24 mm (holotype).

General coloration pale yellow to lutescent with reddish and brown areas.

Head brown, margin of vertex pale, eyes castaneous, portion of head anterior to eyes reddish (except gula which is pale); antennal segment I and II brown at base, reddish apically, segments III and IV reddish; rostrum pale.

Pronotum lutescent at middle, reddish brown laterally, mesoscutum and scutellum brown.

Hemelytra pale lutescent on clavus and apical half of exocorium, endocorium narrowing towards apex, a small transverse fascia formed by paracuneus and corium, outer end of corium and embolium, apical half of cuneus reddish, embolium brown, a subbasal oblique pale fascia on cuneus, membrane fuscous with a transverse pale fascia level with apex of cuneus.



Urapura antennata n. sp.: Fig. 26 – Female, holotype.

Underside of body reddish, coxae, femora and tibiae I and II pale, femora III reddish brown, tibiae III with pale spines and reddish brown apically, tarsi pale.

Morphological characters as mentioned for genus.

Male: Unknown.

Holotype: Female, NEW GUINEA, Neth. Wisselmeren, 1.530 m, Urapura, Kamo Valley, Aug. 16, 1955, J.L. Gressitt, in the collection of the Bernice P. Bishop Museum, Honolulu, Hawaii.

The specific name is after Urapura where the specimen was collected.

Wauella n. gen.

Phylinae, Pilophorini. Body elongate, inclined towards head and cuneus, smooth, with normal black, short hairs and dense scale-like silvery pubescence.

Head vertical, pointed below, much wider than long, vertex convex, marginate, frons rounded in front, eyes strongly compressed, contiguous with