

***Psallus pelidnopterus* (Kirkaldy).**

Psallus sharpianus variety *pelidnopterus* Kirkaldy, 1902:132.

Psallus pelidnopterus (Kirkaldy) Kirkaldy, 1909:197.

Endemic. Hawaii (type locality: Hualalai, 5,000 feet).

Hostplant: *Acacia koa*.

I do not know where the type is. I have been unable to find it in Hawaii, and the species is not represented at the British Museum.

***Psallus sharpianus* Kirkaldy (fig. 78).**

Psallus sharpianus Kirkaldy, 1902:131, pl. 5, fig. 31; 1908:197.

Endemic. Kauai, Maui, Hawaii (type locality: Kona, 4,000 feet).

Hostplants: *Acacia koa*, *Euphorbia*.

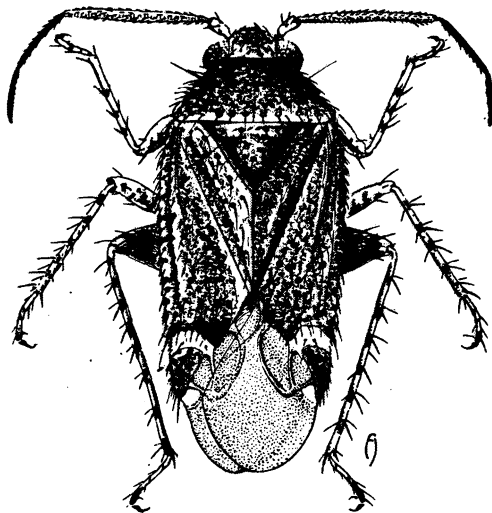


Figure 78—*Psallus sharpianus* Kirkaldy. (Abernathy drawing.)

***Psallus sharpianus* variety *luteus*, new name.**

Psallus sharpianus variety *a* Kirkaldy, 1902:132.

Endemic. Kauai (type locality: Halemanu, 4,000 feet), Oahu, Maui, Hawaii.

Hostplant: *Acacia koa*.

Kirkaldy said that this form differs from typical *sharpianus* because it has the sanguineous coloring replaced by luteous. It may be a distinct species.