

## On some palearctic Hemiptera.

R. LINNAVUORI.

### 1. *Atomoscelis oblongiusculus* n. sp. (Het., Miridae).

♂. Oblong, parallel (fig. 1 J). Colour pale dirty greenish gray. Eyes dark gray. Head convex, tapering forwards,  $0.75\times$  as long as broad over the eyes (in *A. omustus* FIEB.  $0.54\times$ ). Vertex narrow,  $2.4\times$  as broad as the eye (in *omustus*  $2.8\times$ ). Antennae yellow with brown, obliquely and apically directed haircovering. The median side of the 1st joint with two long outwardly directed hairs. The proportions between the joints 7: 29: 18 (the last joint is lacking in the specimen). The haircover of the upper surface of the body long and brownish yellow. Pronotum flat, dull,  $0.45\times$  as long as its breadth at the base. Scutellum triangular, dull. Elytrae faintly shining, indistinctly and not densely punctured, faintly transparent with some smoke-coloured spots as in Fig. 1 J: 1 spot on the apical part of the clavus and 2 on the apex of the corium. Cuneus and membrane mostly smoky. Veins white, as also a transverse area near the apex of the membrane. Under side of head and of pronotum yellowish, abdomen green. Legs gracile and long. On the thighs there are spots, especially numerous on the under side of the hind thighs. The apical part of the hind thigh has on either side a bigger, round black spot with a long black hair. Tibiae with a row of paired black spots, each bearing a long black spine. Claws brown. Right stylus small, nearly parallel with a sharp apex as in Fig. 1 C, D; left stylus big and roundish as in fig. 1 A, B. Hypophysis long and curved. The sensory lobe also has an obliquely directed

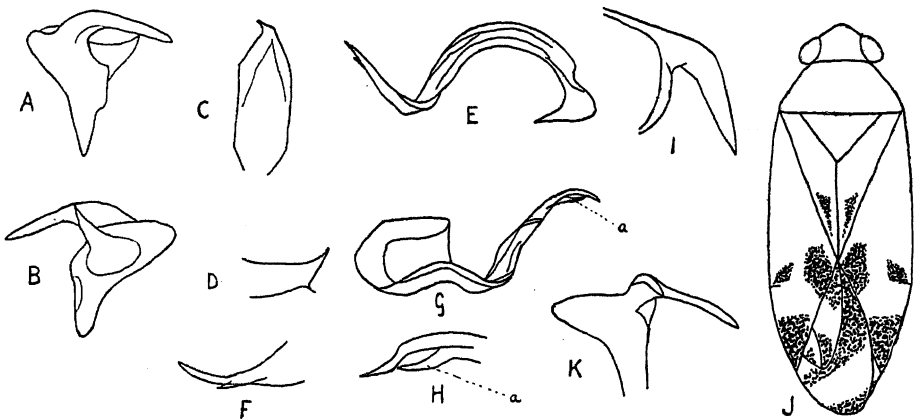


Fig. 1. *Atomoscelis oblongiusculus* n. sp. Left stylus, A from the lateral, B from the median side. C right stylus. D its apex seen from the side. E vesica from the side, F its apex with greater enlargement. G vesica from above, H its apex with greater enlargement.

I theca. J. ♂ from Corfu. *A. omustus* FIEB. K. left stylus from the lateral side. — Orig.