

## On some new or lesser known Heteroptera.

R. LINNAVUORI.

### *Argyrotelaenus elegans* REUT. (*Termtophylidae*).

In the collection of the Finnish University in Turku I found 4 specimens of this rare bug determined as *Montandoniella* sp. I redescribe the species briefly here.

Head long, narrow, black. Eyes large, long and flat. The first antennal joint very thick, black. The 2nd joint slender, longer than the 1st, broadening apically, yellow, the base black. The 3rd and 4th joints of equal length, about  $\frac{2}{3}$  rds of the 2nd, yellow. Rostrum yellow, reaching the fore-coxae. The front part of the pronotum narrow, parallel. The basal part strongly broadening backwards. Pronotum black or dark brown, with a small lighter spot near the fore margin. Scutellum yellow, the base red-brown. Elytrae extending a little over the apex of the abdomen. They are white with dark gray-black figures (fig. 1). Flying wings as long as the abdomen, whitish, transparent. Legs slender, yellow. The hair covering silver-white, dense along the side margins of the pronotum and on the elytrae along the outer side of the clavus. There are also some longer, darker hairs. Length ♂ 2.0 mm. ♀ 2.44 mm.

### *Calocoris saucius* LINNAV. n. sp. (*Miridae*).

Near *C. roseomaculatus* DE G. Head black or the mouth-parts and a little median stripe yellow. Antennae a little thicker than in *roseomaculatus*. The 1st joint black — blackish brown, the others light brown. Pronotum yellow-

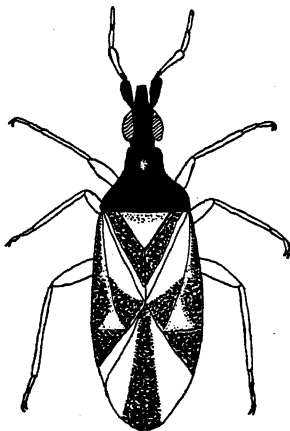


Fig. 1. *Argyrotelaenus elegans* REUT. ♀. — Orig.

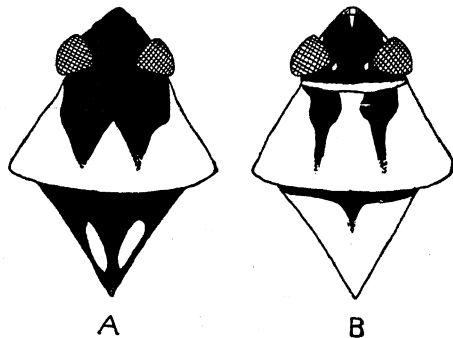


Fig. 2. *Calocoris saucius* n. sp. ♂. Colouring of the head, pronotum and scutellum. A from Tebessa, B from Jericho. — Orig.