

Poecilocapsus Reuter

Poecilocapsus lineatus (Fabricius)

Four-Lined Plant Bug

Lygaeus lineatus Fabricius (1798, p. 541).

ADULT.— Fig. 167. Length 7.00–7.50, width 3.50. General color yellow or green yellow, with four black lines on the dor-

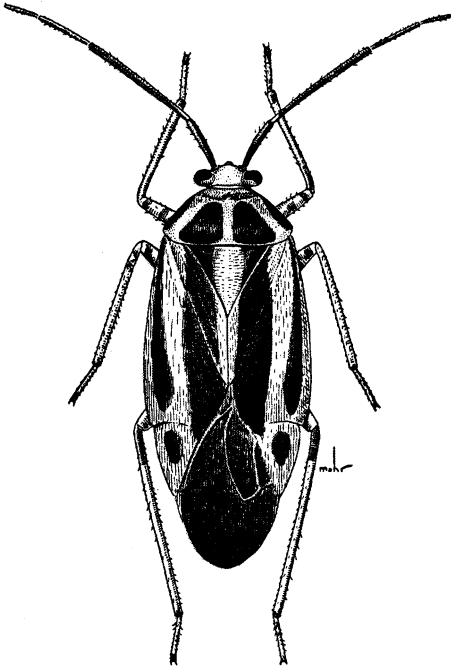


Fig. 167.—*Poecilocapsus lineatus*.

sum; certain specimens have the yellow of the hemeleytra replaced by bright green.

HOST PLANTS.—A large number of herbaceous plants, especially dock (*Rumex* sp.); occasionally becomes a pest on currant bushes (*Ribes* sp.). Large numbers of specimens were collected in Illinois on potato foliage (*Solanum tuberosum*).

KNOWN DISTRIBUTION. — Throughout most of the eastern states and Canada.

Illinois Records.—Sixty-eight males, 129 females and 16 nymphs, taken May 7 to September, are from Algonquin, Anna, Antioch, Beach, Bishop, Bluff Springs, Carbondale, Carlinsville, Champaign, Chicago, Clarksville, Cypress, Danville, Edgebrook, Elizabethtown, Fountain Bluff, Frankfort, Freeport, Galena, Galesburg, Giant City State Park, Makanda, Glendon Park, Glen Ellyn,

Golconda, Grand Detour, Hardin, Havana, Joliet, Kankakee, Karnak, Manito, Morton Grove, Mount Carmel, Oakwood, Odin, Palos Park, Quincy, Rockford, Rockton, Urbana, Vienna, Villa Ridge, Volo, Warsaw, Waukegan, Willow Springs.

Horcias Distant

KEY TO SPECIES

1. Second antennal segment clavate, its maximum diameter exceeding diameter of first segment; embolium white, cuneus rose colored; see frontispiece **illini**, p. 172
- Second antennal segment slightly clavate, but its maximum diameter less than diameter of first segment..... 2
2. Rostrum not surpassing posterior margins of middle coxae; color black with scutellum frequently red..... **fallax**, p. 173
- Rostrum extending nearly to posterior margins of hind coxae; color variable **dislocatus**, p. 173

Horcias illini new species

This species is allied to *dislocatus* (Say), but differs from it in being smaller, and in having a narrower vertex and more strongly clavate second antennal segment; in color, it is very similar to *dislocatus flavidus* Knight, but the cuneus, calli and head are distinctly reddish; the color pattern apparently is not variable.

MALE.—Frontispiece. Length 5.20, width 2.70. Head width 1.12, vertex 0.43. Rostrum, length 1.95, nearly attaining hind margins of middle coxae. Antennae, first segment, length 0.74, thickness 0.14, black; second, 1.86, thickness 0.15, slender at base (0.07 thick), gradually enlarging to clavate on apical half (0.15 thick), black, densely clothed with short, velvety, yellowish pubescence; third, length 0.82, basal one-fourth widened and pale brown, distal part slender and black; fourth, length 1.04, slender, black, with narrow, tan area at base. Pronotum, length 1.21, width at base 2.04. Surface of body smooth and shining; dorsum with sparse and very fine pubescence. General coloration black and white with lighter areas tinged with reddish. Head yellowish to reddish brown, frons with transverse reddish lines on either side. Pronotum white, a large