

co-brownish, opaque anterior to posterior silvery line, basal half with a silvery sheen apparent in certain lights; beset with erect, short, black bristles; posterior silvery line nearly straight, slender, behind this distinctly polished, apex of clavus included. Membrane uniformly darkened with fuscous, an opaque black cloud bordering apex of larger areole. Legs uniformly brownish black, a pale spot on anterior aspect of front coxae near base; hind tibiae strongly flattened and distinctly curved. Venter with a patch of silvery, scalelike pubescence laterally on third segment.

**FEMALE.**—Length 5.30, width 1.80; very similar to the male, but third antennal segment perceptibly thicker (0.10 thick), nearly equal to thickness of first segment.

**HABITS.**—Occurs on pines (*Pinus sylvestris* and *P. resinosa*).

**KNOWN DISTRIBUTION.**—Alabama, Illinois, Iowa, Maryland, Massachusetts, Minnesota, New Jersey, New York, Pennsylvania.

**Illinois Records.**—ANTIOCH: July 5-7, 1932, T. H. Frison, *et al.*, 1 ♀. GRAND DETOUR: July 2, 1932, Castle Rock, Dozier & Mohr, 1 ♂. STARVED ROCK STATE PARK: July 14, 1932, on Scotch pine, Dozier & Park, 3 ♂. URBANA: June 20, 1932, T. H. Frison, 1 ♀.

### *Pilophorus laetus* Van Duzee

*Pilophorus laetus* Van Duzee (1918, p. 294).

Not taken in Illinois; breeds on scrub pine (*Pinus virginiana*). Known from Alabama, District of Columbia, Maryland, Massachusetts, New York, Tennessee, Virginia.

### *Pilophorus perplexus* Douglas & Scott

*Pilophorus perplexus* Douglas & Scott (1875, p. 101).

Not taken in Illinois; known from Connecticut, New York, Nova Scotia, Ontario.

### *Pilophorus taxodii* new species

This species is allied to *juniperi* Knight, but is distinguished by the dark third antennal segment and pale fourth segment.

**MALE.**—Fig. 141. Length 3.70, width 1.30. Head width 1.03, vertex 0.52. Rostrum, length 1.56, dark brown, reaching to posterior margin of middle coxae. Antennae,

first segment, length 0.30, yellowish brown; second, 1.25, yellowish brown, darker on apex, clothed with fine, short, black pubescence; third, 0.47, uniformly brown; fourth, 0.52, pale. Pronotum, length 0.74, width at base 1.12, very dark brown, paler on anterior half, finely rugulose. Mesoscutum and scutellum very dark brown, disk of scutellum strongly convex; bordered with silvery, scalelike pubescence. Hemelytra fulvous to brown, but black behind posterior sil-

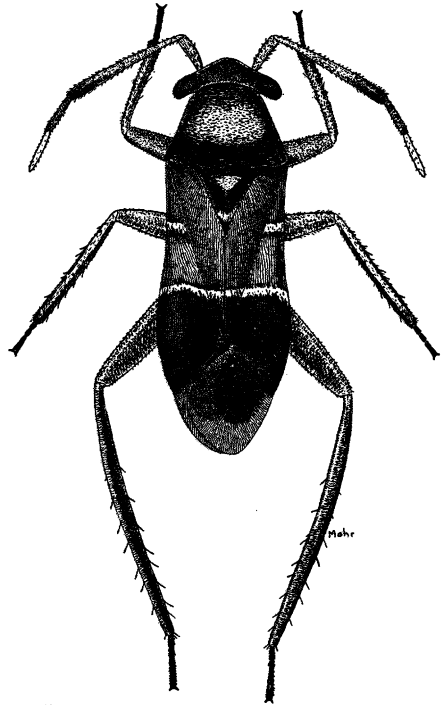


Fig. 141.—*Pilophorus taxodii*.

very line; clothed with fine, short, recumbent, black pubescence; posterior silvery line transverse, nearly straight, not interrupted; basal silvery line restricted to corium and embolium; surface behind posterior silvery line polished, black; pubescence fine, black, cuneus very similar; membrane pale fuscous, an opaque, dull, very dark brown spot covering larger areole and an equal area extending toward middle of membrane. Legs yellowish brown; hind tibiae dark brown, strongly compressed, edges carinate, spines rather short; tarsi fuscous. Venter very dark brown, polished, fulvous brown at base and with a patch of silvery scales on either side at margin of dark color.