

frequently collected at light. In New York, Dr. C. P. Alexander in letter reports this species as flying up in large numbers from the grass after sundown. In Iowa I found this species abundant in closely cropped pasture land where the little brown ants *Lasius alienus* var. *americanus* Emery were abundant.

KNOWN DISTRIBUTION.—Connecticut, Illinois, Iowa, Maryland, Massachusetts, Michigan, Minnesota, Montana, New York, North Carolina, Ohio, Ontario, Pennsylvania, South Dakota, Utah, Washington, Wyoming.

Illinois Records.—Seventeen males, taken May 10 to Aug. 22, are from Algonquin, Chicago, Oak Lawn, Palos Park, Urbana, Willow Springs.

Cyrtopeltocoris Reuter

Cyrtopeltocoris illini new species

This species is to be distinguished from allied species by the pointed, conical development of the scutellum, fig. 137.

MALE.—Fig. 137. Length 3.60, width 0.91. Head width 0.75, vertex 0.52; eyes scarcely raised above contour of frons, a sharp carina at base of vertex. Rostrum, length 1.40, reaching to middle of hind coxae. Antennae, first segment, length 0.28, pale to white; second, 1.25, nearly cylindrical, fuscous brown, with fine, pale pubescence; third, 0.86, equal in thickness to second segment, dark brown; fourth, 0.60, thickness equal to that of preceding segments, dark

brown. Pronotum, length 0.73, width at base 0.95, disk strongly convex on basal half, collar distinctly narrowed, not equal to width of vertex. Scutellum remarkably developed into a vertical cone with an acuminate point, mesoscutum broadly exposed and sloping downward to base of scutellum. General color medium brown to dark brown, smooth or only very minutely punctate, mod-

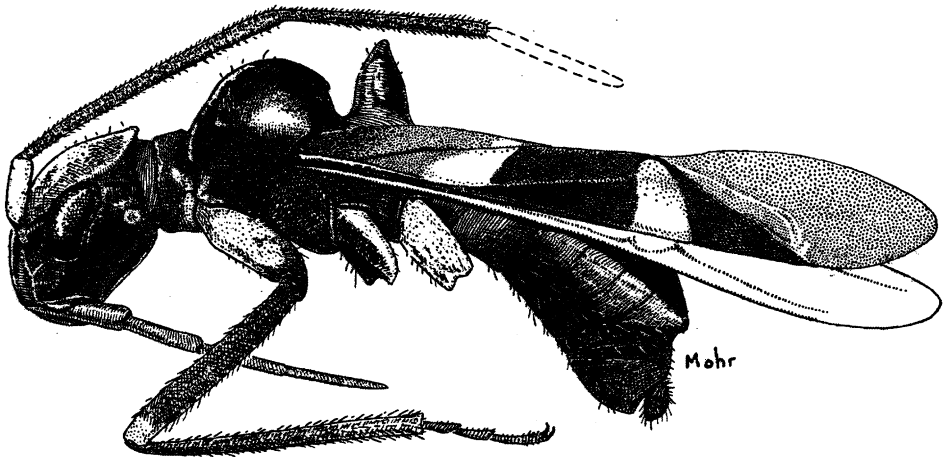
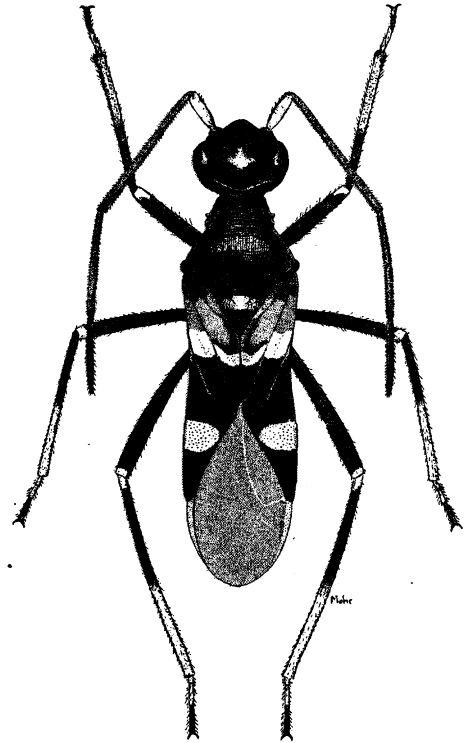


Fig. 137.—*Cyrtopeltocoris illini*, dorsal and lateral aspects.