

(usually), all but base of clavus and large spot on inner apical angles of corium, dark fuscous to black; pale area of corium extending along claval suture and thus tending to separate dark apical area from that of

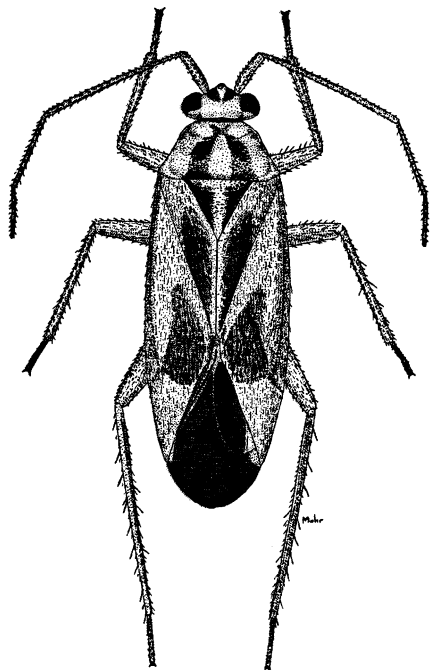


Fig. 129.—*Orthotylus dorsalis*, ♀.

clavus; membrane infuscated, veins distinctly paler. Legs green, femora yellowish; tip of rostrum and apices of tarsi blackish.

HOST PLANT.—Willow (*Salix* sp.).

KNOWN DISTRIBUTION.—Connecticut, Illinois, Iowa, Maine, Michigan, Minnesota, New York, Ohio, Ontario, Quebec.

ILLINOIS RECORDS.—NORTHERN ILLINOIS: 4 ♀. ANTIOCH: July 5-7, 1932, Frison *et al.*, 1 ♂, 2 ♀. FREEPORT: July 2, 1917, 1 ♀. GRANDVIEW: June 24, 1932, Frison & Mohr, 1 ♂.

Orthotylus taxodii new species

This species is allied to *robiniae* Johnston, but is distinguished by the longer second antennal segment.

MALE.—Length 3.30, width 1.10. Head width 0.62, vertex 0.30. Rostrum reaching to bases of hind coxae. Antennae yellowish green, with pale pubescence; last two segments fuscous; length of first segment 0.26; second, 1.00, cylindrical, nearly equal to

thickness of first; third, 0.54; fourth, 0.30. General color green; with mesoscutum, calli and vertex yellowish; hemelytra slightly translucent; cuneus uniformly green like corium; membrane pale fumate, veins green. Clothed with simple, pale yellowish pubescence. Legs yellowish green; tibial spines dark. Genital claspers distinctive for species, fig. 128.

FEMALE.—Length 3.40, width 1.20. Slightly more robust than male, but very similar in color and pubescence. Head width 0.64, vertex 0.34. Antennae, first segment, length 0.27; second, maximum width, 1.14, tapering to become more slender on basal half; third, length 0.56; fourth, length 0.37. Pronotum, length 0.48, width at base 1.00.

HOST PLANT.—Bald cypress (*Taxodium distichum*).

Holotype, male.—Grantsburg, Ill., June 22, 1932, on cypress, Ross, Dozier & Park.

Allotype, female.—Same data as for holotype.

Paratypes.—ILLINOIS.—Same data as for holotype, 7 ♂, 36 ♀. ELIZABETHTOWN: June 22-24, 1932, Ross, Dozier & Park, 2 ♀. GOLCONDA: June 22, 1932, Ross, Dozier & Park, 6 ♀. KARNAK: June 14, 1934, on cypress, DeLong & Ross, 12 ♂, 26 ♀. SHAWNEETOWN: June 14, 1934, DeLong & Ross, 1 ♀.

Orthotylus viridis Van Duzee

Orthotylus viridis Van Duzee (1916*b*, p. 103).

MALE.—Length 4.60, width 1.50. Rostrum reaching to middle of intermediate coxae. Antennae dusky yellow, last two segments pale fuscous. General color green; head, pronotum anteriorly, embolium, and femora, yellowish; base of tylus with a small fuscous spot; membrane pale to fumate. Clothed with simple, recumbent, pale pubescence. Genital claspers as in fig. 128.

FEMALE.—Length 4.80, width 1.55. Slightly more robust than male, but very similar in color and pubescence.

HOST PLANT.—Black willow (*Salix nigra*) and perhaps other willows.

KNOWN DISTRIBUTION.—Connecticut, District of Columbia, Illinois, Iowa, Maryland, Michigan, Mississippi, New York, North Carolina, Ohio, Pennsylvania, Quebec, Tennessee, Virginia.

ILLINOIS RECORDS.—Sixty-three males and 60 females, taken June 14 to Aug. 1, are