

Parthenicus Reuter

KEY TO SPECIES

1. Body color fuscous to black; first antennal segment black, second segment pale.....**nigrellus**, p. 77
Body straw colored to yellowish; antennae pale..... 2
2. Body and legs uniformly pale yellowish or pinkish, without flecks or dots.....**taxodii**, p. 76
Body more or less pale, hind femora pale fuscous, usually sprinkled with reddish dots; scutellum fuscous; cuneus tinted with red.....**juniperi**, p. 76

Parthenicus juniperi (Heidemann)

Psallus juniperi Heidemann (1905, p. 49).

MALE.—Fig. 110. Length 3.00, width 1.00. General color pale yellowish. Cuneus, apical one-third of corium and base of head tinged with reddish, color sometimes separating into specks; femora pale fuscous, sprinkled with reddish; scutellum and base of clavus darkened with fuscous. Body clothed with fine, erect, golden pubescence,

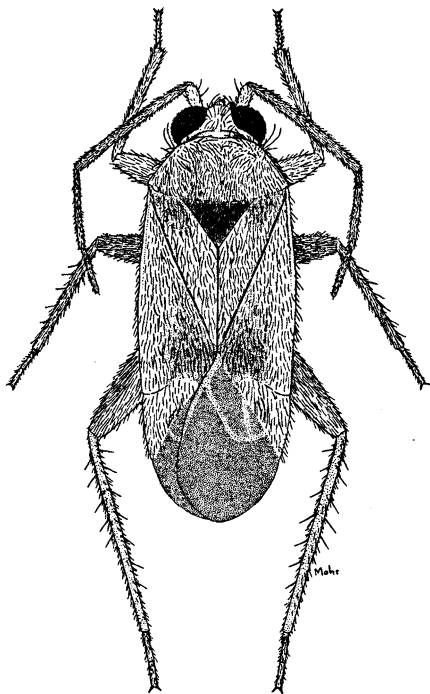


Fig. 110.—*Parthenicus juniperi*, ♂.

intermixed with more closely appressed, scalelike, golden hairs, the hairs tending to silvery on scutellum and on transverse area extending across corium at tip of clavus; pubescence becoming black across apex of corium and forming a spot on inner edge of cuneus at middle and at base; membrane uniformly infuscated and iridescent.

FEMALE.—Very similar to male in form and color.

FOOD PLANT.—Red cedar (*Juniperus virginiana*).

KNOWN DISTRIBUTION.—Ranges widely east of the 100th meridian, occurring nearly everywhere red cedar grows in natural stands.

Illinois Records.—Twenty-one males and 108 females, taken June 10 to July 25, are from Alton, Antioch, Eichorn, Ernst, Galena, Golconda, Grayville, Hillsboro, Kampsville, Karnak, Keithsburg, Oquawka, Starved Rock State Park, Urbana, White Pines Forest State Park.

Parthenicus taxodii new species

This may be distinguished from allied species by its small size, its uniformly yellowish salmon color and its pale fuscous membrane.

MALE.—Length 2.00, width 0.90. Head width 0.54, vertex 0.17. Rostrum, length 0.73, extending very slightly behind posterior coxae. Antennae yellowish to dusky; length of first segment, 0.13; second, 0.73; third, 0.43; fourth, 0.30. Pronotum, length 0.34, width at base 0.73. Dorsum clothed with deciduous, silvery to golden, sericeous pubescence intermixed with more nearly erect, simple, pale pubescence. General coloration rather uniformly yellowish to salmon; strongly colored specimens may have scutellum dusky and clavus tinted salmon pink; membrane uniformly pale fuscous; veins yellowish.

FEMALE.—Length 2.20, width 0.91. Head width 0.47; vertex 0.26. Pronotum, length 0.32, width at base 0.75. Antennae, length of first segment, 0.13; second, 0.70; third, 0.40; fourth, 0.29. Form more robust than that of male, but very similar in pubescence and coloration.

FOOD PLANT.—Bald cypress (*Taxodium distichum*).

Holotype, male.—Karnak, Ill.: July 26, 1930, on *Taxodium distichum*, Knight & Ross.