

from Alton, Antioch, Ashley, Bluff, Cairo, Clay City, Danville, Darwin, De Soto, Dolson, Dongola, Dubois, Eichorn, Elizabethtown, Evanston, Fairfield, Fort Sheridan, Galesburg, Grantsburg, Hardin, Harrisburg, Havana, Herod, Kampsville, Karnak, Marshall, McHenry, Meredosia, Metropolis, Monticello, Olive Branch, Oregon, Parker, Pulaski, Quincy, Rock Island, Shawneetown, Starved Rock State Park, Urbana, West Pullman, White Heath, Willow Springs, Zion.

***Hyaliodes harti* new species**

This is distinguished from *vitripennis* (Say) by the longer first antennal segment,

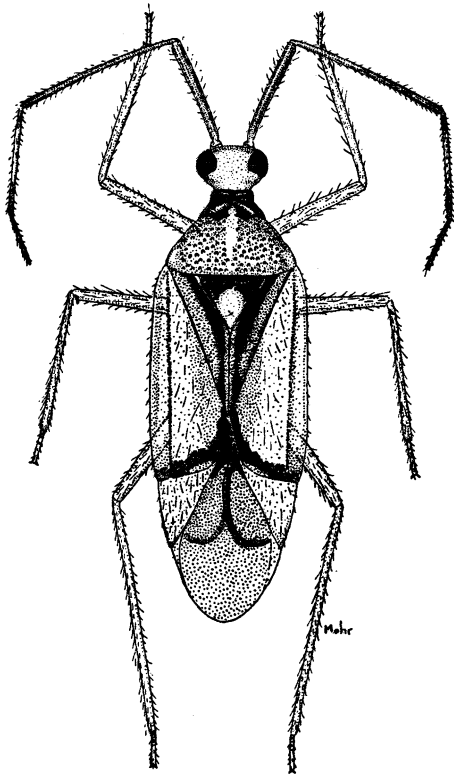


Fig. 98.—*Hyaliodes harti*.

which, in the male, is equal to the width of the pronotum at base.

**MALE.**—Length 4.40, width 1.40. Head, width 0.73, vertex 0.26. Rostrum just attaining posterior margins of middle coxae, length 1.20. Antennae, first segment, length 1.10, bright red; second, 1.69, reddish to black; third, 1.12, black; fourth, 0.60. Pro-

notum, length 0.82, width at base 1.12. General color pale, translucent; head and body yellowish; calli, collar, scutellum except apex, mesoscutum, and inner margin of clavus, black; apex of scutellum white; apex of corium, and tip of embolium, red; cuneus and membrane clear, anal angles fuscous, veins red to fuscous. Legs pale to yellowish.

**FEMALE.**—Fig. 98. Length 4.90, width 1.60. Head width 0.71, vertex 0.32. Antennae, first segment, length 1.08; second, 1.77. Pronotum, width at base 1.34. Very similar to male in form and coloration.

**Holotype, male.**—Harrisburg, Ill.: June 25, 1932, Ross, Dozier & Park.

**Allotype, female.**—Same data as for holotype.

**Paratypes.**—ILLINOIS.—Same data as for holotype, 11 ♂, 3 ♀. NORTHERN ILLINOIS: 1 ♂, 3 ♀. ALTON: July 19-21, 1932, Ross & Dozier, 1 ♀. ANNA: June 27, 1909, 2 ♀. ASHLEY: Aug. 7, 1917, 3 ♂, 3 ♀. BEVERLY HILLS: Sept. 11, 1907, E. B. Chope, 1 ♀; July 13, 1908, W. J. Gerhard, 1 ♂. DIXON SPRINGS: June 23, 1932, Ross, Dozier & Park, 1 ♂. DOLSON: Sept. 30, 1935, T. H. Frison, 1 ♀. DUBOIS: July 2, 1909, 2 ♂. EICHORN: June 24, 1932, Hick's Branch, on *Alnus rugosa*, Ross, Dozier & Park, 1 ♂. ELIZABETHTOWN: June 22-24, 1932, Ross, Dozier & Park, 1 ♂; July 8, 1935, Ross & DeLong, 2 ♀. GALENA: June 30, 1932, Dozier & Mohr, 1 ♀. GALESBURG: July 24, 1892, Stromberg, 2 ♂, 2 ♀. GEFF: June 12, 1934, DeLong & Ross, 1 ♀. GLENVIEW: July 19, 1931, A. R. Park, 1 ♀. HEROD: June 23, 1927, T. H. Frison, 1 ♂; June 24, 1932, Ross, Dozier & Park, 1 ♀. JOLIET: July 31, 1930, Frison & Knight, 2 ♀. KARNAK: June 23, 1932, Ross, Dozier & Park, 1 ♀. LA GRANGE: Sept. 11, 1907, 1 ♂. LA RUE: July 11, 1935, DeLong & Ross, 1 ♂, 1 ♀. LAWRENCEVILLE: Sept. 7, 1933, Ross & Mohr, 1 ♀. MAKANDA: June 26, 1909, 1 ♂. MARSHALL: July 23, 1932, Dozier & Park, 1 ♂. METROPOLIS: Aug. 20, 1916, 1 ♀. MONTICELLO: June 28, 1914, 1 ♀. NORMAL: July 22, 1884, on black walnut, 1 ♀; July 26, 1884, on leaves of maple, 1 ♀. OAKWOOD: July 22, 1930, Hottes & Tauber, 1 ♀; Oct. 6, 1930, T. H. Frison, 1 ♀. OLIVE BRANCH: Oct. 2, 1909, W. J. Gerhard, 1 ♂. QUINCY: Aug. 14, 1889, "sweeping along shore of Mississippi R.," C. A. Hart, 1 ♀. ROCKFORD: July, 1932, Dozier & Mohr, 1 ♀. ROCK ISLAND: July 7, 1934, DeLong & Ross, 1 ♂. St.