

Female: Length 4.7 mm., width 1.9 mm.; more robust than the male but very similar in coloration.

Holotype: Male, 8 Aug., 1910, East River, Conn. (C. R. Ely); author's collection. Allotype: taken with the type. Paratypes: Females (4), July-Sept., 1910, type locality (C. R. Ely). DISTRICT OF COLUMBIA—Female, 12 July, 1909, Washington (O. Heidemann). NEW YORK—Female, 10 Sept., 1917, Syracuse (C. J. Drake).

Phytocoris caryae Knight, new species.

Male: Length 5.3 mm., width 1.74 mm. Head: Width .93 mm., vertex .28 mm.; yellow, small spot behind dorsal margin of each eye, irregular large spot each side of front, and spot on dorsal margin or lora, orange colored; front and vertex bearing prominent pale hairs. Rostrum, length 2.2 mm., reaching upon fifth abdominal segment, pale yellowish, brownish black at apex.

Antennae: Segment i, length 1.14 mm., yellow, anterior aspect with small orange spots, largest one just before apex, setae pale to dusky; ii, 2.46 mm., uniformly pale yellow; iii, 1.5 mm., yellow; iv, 1.16 mm., yellow, dusky at apex.

Pronotum: Length .81 mm., width at base 1.44 mm.; greenish yellow, with four orange stripes on disk, sometimes joining basally; calli pale, collar with broad orange spot each side of median line and extending to touch callus; propleura with small orange ray behind lower half of coxal cleft; clothed with pale yellowish pubescent hairs, a few dusky hairs on basal margin.

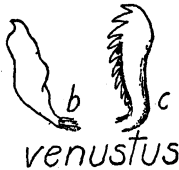


FIG. 145. *Phytocoris venustus* Knight,—male genital claspers, (b) right clasper, lateral aspect, (c) flagellum. Greatly enlarged. Drawing by Dr. H. H. Knight.



FIG. 146. *Phytocoris caryae* Knight,—male genital claspers, (b) right clasper, lateral aspect, (c) flagellum. Greatly enlarged. Drawing by Dr. H. H. Knight.

Scutellum greenish yellow, an oblique orange mark each side of median line at middle. Sternum and pleura pale yellowish.

Hemelytra: Embolar margins very slightly arcuate; pale to greenish yellow; mottled with fusco-orange, darkest on clavus and irrorate with large irregular greenish yellow spots, apical one-fifth of corium nearly uniformly greenish yellow, embolium with a few scattering reddish orange spots; tip of clavus with dusky spot and beset with prominent black hairs; cuneus yellowish translucent.