

ation very similar to that of male but hemelytra shorter and embolar margins somewhat more strongly arcuate.

A single specimen is at hand, female, 17 Aug., 1914, Yarmouth, NOVA SCOTIA (W. H. Brittain). Comparison has been made with European specimens of *ulmi* Linnaeus which were determined by Reuter.

Recorded in Europe as occurring on *Ulmus*, *Alnus*, *Quercus*, and other plants.

***P. palmeri* Reuter.**

Acta Soc. Sci. Fenn., xxxvi, No. 2, 32, 1909.

Male: Length 7 mm., width 1.7 mm. Sordid white-canescens, variegated with fuscous and black; sides of pronotum and thin band before basal margin blackish, disk fuscous to blackish vittate.

Antennae: Segment i linear, slender, variegated with white, equal in length to pronotum plus basal third of head, and but little shorter than basal margin of pronotum; segment ii very narrowly blackish at base, with a narrow white band just short of middle.

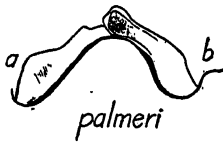


FIG. 134. *Phytocoris palmeri* Reuter,—male genital claspers, (a) left clasper, lateral aspect, (b) right clasper, lateral aspect. Greatly enlarged. Drawing by Dr. H. H. Knight.

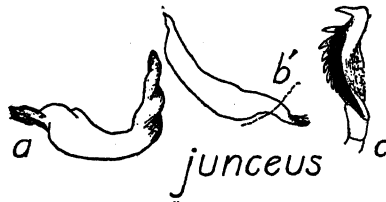


FIG. 135. *Phytocoris junceus* Knight,—male genital claspers, (a) left clasper, lateral aspect, (b) right clasper, lateral aspect, with outline of genital segment added, (c) flagellum. Greatly enlarged. Drawing by Dr. H. H. Knight.

Scutellum black, shining, basal angles and apical median line white. Membrane densely hyaline, conspurcate with blackish. Genital claspers distinctive (fig. 134), especially in the form of right clasper.

Described from Quinze Lake, Quebec. The figure of the male genital claspers was drawn from the type in the collection of E. P. Van Duzee.

***Phytocoris junceus* Knight, new species.**

Male: Length 9.2 mm., width 2.7 mm. Head: Width 1.11 mm., vertex .41 mm.; black, shining; collum pale, median line pale but with slender blackish line each side setting it off, also an oblique black line behind dorsal margin of each eye; vertex with slight groove on median line, each side with a prominent alutaceous spot; front beset with prominent brownish black hairs. Rostrum, length 3.6 mm., reaching upon sixth abdominal segment, brownish to piceous, darker apically.