

prominent; antennæ slender, basal joint not passing eyes, second and third joints subequal in length, fourth short and moderately thickened; pronotum transverse, about three times broader at base than long, centrally transversely impressed, the anterior angles rounded, lateral margins convex, posterior margin sub-concavely sinuate; mesonotum exposed; scutellum longer than broad at base, angularly attenuated from base; corium broad, costal margin moderately convex, cuneus broad, a little broader than long; membrane passing the abdominal apex, with a single narrow cell at base; rostrum long, a little passing the posterior coxæ; femora distinctly thickened.

3070. *Jehania mahal*, sp. n.

Obscure greyish, spotted and marked with black; head pale ochraceous, with a central black fascia, bifurcating anteriorly, before the ocelli; antennæ brownish ochraceous, more than apical half of second joint (excluding extreme apex), third joint and base of fourth pale fuscous; pronotum obscure yellowish grey with a broad central longitudinal fascia branching off laterally on each side, black; mesonotum black, its lateral margins narrowly

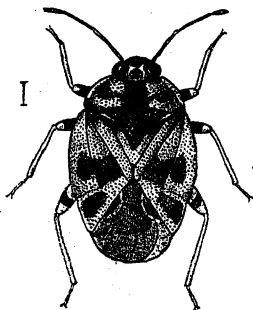


Fig. 165.—*Jehania mahal*.

yellowish grey; scutellum black, its lateral margins (excluding base and apex) yellowish grey; corium, clavus, and cuneus yellowish grey, a small spot at base and two large spots on disk of corium and a transverse spot on cuneus, black; membrane greyish, finely spotted with piceous, the base reflecting the dark abdomen beneath, the dark basal cell outwardly palely margined; sternum and legs pale ochraceous; a spot near anterior and intermediate coxæ and subapical annulation to femora black.

Length 3 millim.

*Hab.* E. Himalayas; Kurseong, 4,700 ft. (*Annandale, Ind. Mus.*).

“Among lichen on tree-trunk.” (*N. Annandale.*)