

middle interrupted by the inground black spots, two longitudinal dashes on basal outer half, the whole apical margin to the interior base of cuneus and a short longitudinal streak going out from here as well as apical half of cuneus and protopleura beneath, narrowly

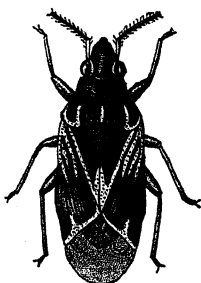


Fig. 150.—*Fulvidius punctatus*.

yellow; membrane fuliginous, inside the tip of cuneus pale; antennæ yellowish-brown, second joint at apex rather darker; rostrum and legs brown; apical halves of femora and apices of tibiæ yellow; head about one-third shorter than pronotum with the eyes scarcely narrower than front margin of same; front only a little broader than diameter of eye, in middle very shallowly furrowed; first joint of antennæ about one-fourth shorter than breadth of front with eyes, second joint one-fourth shorter than basal margin of pronotum." (*Poppius*.)

"Length 4.5, lat. 2 millim."

*Hab.* Burma; Karenni (*Fea*), *vide* Poppius.

I have not seen this species which is stated to be founded on a female specimen. I have reproduced the description and figure of Poppius, between which there appear to be some slight discrepancies.

#### Genus **THAUMASTOMIRIS**. (Vol. II, p. 473.)

##### 3055. *Thaumastomiris piceatus*, sp. n.

Sanguineous; antennæ, eyes, clavus (excluding base) and inner area of corium (excluding base) piceous or black; membrane fuliginous with the veins darker; head vertically depressed in front of eyes, strongly transversely impressed between the eyes; pronotum with a distinct anterior collar and behind which the transverse callosities are prominent and medially well separated, the posterior disk very finely granulate; corium very finely and indistinctly granulate and obscurely shortly pilose, the costal