

## Synopsis of Genera.

- A. Scutellum long and angularly produced; eyes of moderate size and placed wide apart.
- a. Head including eyes very little narrower than anterior margin of pronotum; lateral margins of scutellum sinuate . . . . . ISOMETOPUS, p. 484.
- b. Head including eyes much narrower than anterior margin of pronotum; lateral margins of scutellum obliquely straight . . . . . TURNEBUS, p. 485.
- B. Scutellum small; eyes extremely large and almost meeting above head . . . . . SOPHIANUS, p. 485.

## Genus ISOMETOPUS.

*Isometopus*, *Fieb. Wien. ent. Monatsb.* iv, p. 259, pl. vi. a (1860); *id. Eur. Hem.* pp. 61 & 237; *Reut. Bih. Vêt.-Ak. Handl.* iii, 1, p. 61 (1875).

Type, *I. intrusus*, H.-Sch., a European species.

*Distribution.* Palæarctic and Oriental Regions.

Somewhat broadly ovate; head broad, rounded in front, ocelli present and distinct; antennæ absent in the Burmese example here enumerated, but described in typical examples as having the third and fourth joints slender; rostrum reaching the second abdominal segment; pronotum much broader than long, the lateral margins convexly rounded; mesonotum exposed in a lobate process on each side; scutellum long, narrowed posteriorly; hemelytra convexly amplified on each side; cuneus broad.

I feel no doubt that the single Burmese specimen now before me, minus legs and antennæ, belongs to this Palæarctic genus.

1465. *Isometopus feanus*, sp. n.

Brownish-ochraceous; head and lateral areas of pronotum and corium paler in hue; membrane pale fuscous with the lateral and apical areas greyish; eyes pale reddish; head with a distinct discal transverse impression between eyes, the ocelli very much nearer to eyes than to each other; pronotum finely transversely rugulose, with a central short longitudinal impression on anterior area; scutellum triangularly foveate at base, beyond which it is finely transversely rugulose; corium finely rugulosely punctate, its lateral margins slightly reflexed.

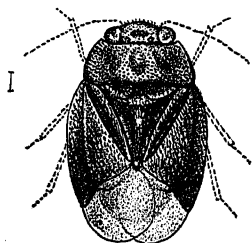


Fig. 317.—*Isometopus feanus*.

Length 2 millim.

*Hab.* Burma, Palon (*Fea*).