

- B. Body pubescent; second joint of antennæ about equal in length to breadth of head including eyes *CAMPYLOMMA*, p. 483.

Genus *PSALLUS*.

Psallus, *Fieb. Wien. ent. Monatsb.* ii, p. 320 (1858); *id. Eur. Hem.* pp. 74 & 305 (1861); *Reut. Act. Soc. Sc. Fenn.* xiii, p. 101 (1884).

Apocremnus, *Fieb. Wien. ent. Monatsb.* ii, p. 320 (1858).

Agalliastes (part.), *Fieb. Eur. Hem.* pp. 74 & 310 (1861).

Atractotomus (part.), *Fieb. Eur. Hem.* pp. 71 & 294 (1861).

Liops (part.), *Fieb. Verh. z.-b. Ges. Wien*, xx, p. 254 (1870).

Type, *P. roseus*, Fabr., a Palæarctic species.

Distribution. Probably universally distributed, but not yet recorded from the Ethiopian Region.

Body oblong, sometimes subelongate (♂), or oblongly ovate or ovate in ♀, above more or less palely pilose; head vertically inclined; clypeus distinctly prominent, compressed; eyes somewhat large, generally strongly granulate; rostrum reaching or passing the intermediate coxæ; antennæ with the second joint in the ♂ longer than in the ♀ and a little thickened apically; pronotum short, apical margin straight or nearly so, lateral margins straight, base truncate; posterior femora a little incrassate.

The male is more elongate than the female, and the sexes sometimes vary considerably in colour.

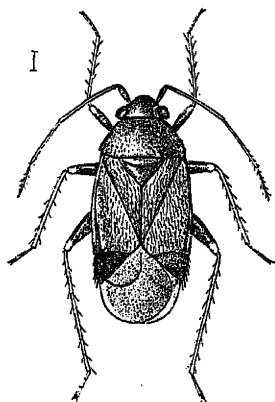


Fig. 315.—*Psallus singalensis*.

1463. *Psallus singalensis*, sp. n.

Black, thickly palely pilose; lateral marginal areas of the corium obscure brownish-ochraceous; cuneus pale castaneous; membrane fuliginous, its apical margin paler; femora piceous, their apices, the whole of the tibiæ, and tarsi (excluding apices) ochraceous; antennæ with the first joint black, second ochraceous with its apex fuscous, third and fourth fuscous; rostrum and trochanters brownish-ochraceous; tibiæ speckled with fuscous; corium and cuneus densely, pronotum and head less thickly palely pilose.

Length 2 millim.

Hab. Ceylon; Peradeniya (*Green*).

Allied to the Palæarctic species *P. obscurellus*, Fall.