

Genus **ZANCHIUS**, nov.

Type, *Z. annulatus*, Dist.

*Distribution.* Ceylon.

Elongately ovate; head broad, deeply channelled near inner margins of eyes, in front of which it is vertically deflected, eyes moderately exserted and situate nearer to the insertion of antennæ than base of head; rostrum reaching the posterior coxæ; antennæ long, basal joint about as long as head, second nearly four times longer than first, third and fourth almost subequal in length; pronotum somewhat strongly constricted before middle, lateral margins nearly straight, basal margin sinuate, mesonotum exposed; scutellum subtriangular; corium with a distinct cell-like process at apex; cuneus longer than broad; legs somewhat long and slender, posterior femora moderately thickened.

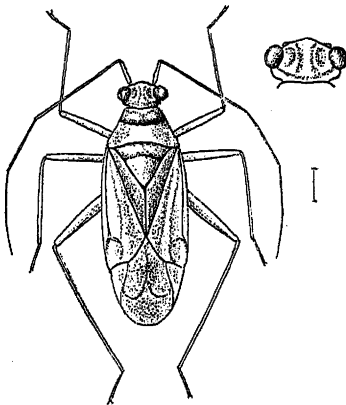
1457. *Zanchius annulatus*, sp. n.

Fig. 309.—*Zanchius annulatus*.

Stramineous; eyes, two annulations to second joint of antennæ, the whole of third and fourth joints, and the apices of the tarsi fuscous; head deeply channelled near inner margins of eyes; anterior area of pronotum tumid; corium, cuneus and membrane a little paler than other parts of upper surface; lateral margins of corium a little reflexed; hemelytra very finely tomentose.

Length  $4\frac{1}{2}$  millim.

*Hab.* Ceylon; Peradeniya (Green).

Genus **GALLOBELICUS**, nov.

Type, *G. crassicornis*, Dist.

*Distribution.* Oriental Region.

Elongate; head robust, vertically deflected in front; eyes large, inserted about midway between base of head and insertion of antennæ; antennæ short, robust, first joint slightly shorter than head, second a little more than twice as long as first, third about as long as second; rostrum about reaching the intermediate coxæ; pronotum narrowed anteriorly, with a distinct anterior collar, transversely constricted before the middle, with a distinct central longitudinal sulcation; mesonotum exposed; scutellum subtriangular, a little tumid; hemelytra with the lateral margins straight, cuneus much