

about as long as broad; eyes somewhat strongly exerted, almost touching anterior margin of pronotum; rostrum reaching the posterior coxæ; antennæ with the second joint shorter than the basal margin of the pronotum, third and fourth joints together longer than the second; pronotum with the posterior about twice as broad as anterior margin; corium more or less punctate.

1436. *Liocoris myittæ*, sp. n.

Ochraceous; apical half of second joint and the third and fourth joints of antennæ, two large rounded spots at anterior margin and two (obscure) at posterior margin of pronotum, two rounded spots at base of scutellum, clavus, a large angulated transverse spot at apex of corium, and a large spot at inner basal angle of cuneus black; membrane pale fuliginous mottled with ochraceous; femora reddish-ochraceous; tibiæ and tarsi pale fuscous; apices of femora obscurely annulated with fuscous; apices of tibiæ black; abdomen beneath with a sublateral series of small fuscous spots.

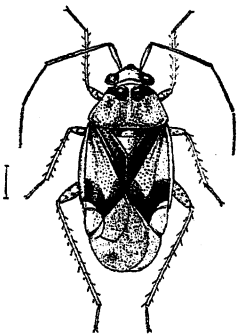


Fig. 298.—*Liocoris myittæ*.

Length 4 millim.

Hab. Tenasserim; Myitta (*Doherty*).

1437. *Liocoris formosus*, sp. n.

Black; head (excluding eyes) and pronotum (excluding basal margin) ochraceous; a large apical spot to scutellum, an elongate spot at base, and a transverse spot at apex of corium, and apex of cuneus flavescens; membrane fuliginous mottled with pale fuscous; antennæ piceous, basal third of second joint, basal half of third joint, and extreme base of fourth joint ochraceous; body beneath and legs black; head beneath and lateral areas of prosternum reddish-castaneous; rostrum, anterior coxæ, anterior femora (excluding apices), a broad central annulation to anterior tibiæ, and numerous annulations to intermediate and posterior tibiæ flavescens; above shining, corium very obscurely and sparingly punctate.

Length $3\frac{1}{2}$ millim.

Hab. Tenasserim; Myitta (*Doherty*).

1438. *Liocoris partitus*, *Walk.* (*Capsus*) *Cat. Het.* vi, p. 119 (1873).

Very pale luteous; antennæ (excluding basal joint), eyes, clavus, extreme basal margin of scutellum, lateral and apical margins of corium, the first strongly widened towards apex, apex of cuneus, central lobe to deflected head, and disk of mesosternum black; disk of abdomen beneath, and a submarginal series of small spots,