

head glabrous; pronotum coarsely punctate, the anterior transverse callosity glabrous; scutellum glabrous; clavus thickly and coarsely punctate, corium with subclaval and sublateral punctures, the corium with a more or less distinct fuscous longitudinal streak; abdomen beneath with a central sublateral fuscous fascia; rostrum just passing the intermediate coxæ.

Var. Basal joint and base of second joint of antennæ fuscous.

Length 4 millim.

Hab. Ceylon (*Lewis*); Peradeniya (*Green*). Tenasserim; Myitta (*Doherty*).

Genus **HERMOTINUS**, nov.

Type, *H. signatus*, Dist.

Distribution. Tenasserim.

Somewhat broadly ovate; pronotum strongly punctate; corium impunctate, moderately pilose; head somewhat broad, anteriorly deflected; eyes very large and transverse, touching but projecting beyond the anterior margin of the pronotum; antennæ slender, first joint longer than head, second nearly three times the length of first; rostrum reaching the intermediate coxæ; pronotum with a narrow anterior collar, behind which are two transverse callosities, posterior margin more than twice the width of anterior margin, its lateral margins sinuate, the disk tumid; scutellum subtriangular, a little transversely foveate at base; hemelytra with the lateral margins somewhat amplified, the cuneus a little longer than broad, the fracture distinct but not profound; legs of moderate length, the femora moderately incrassate, the tibiæ setose.

1434. *Hermotinus signatus*, sp. n.

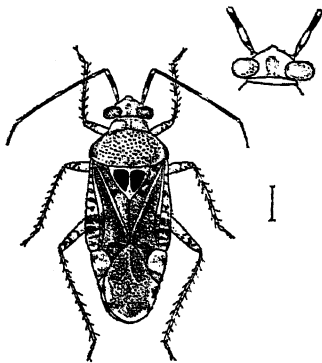


Fig. 296.—*Hermotinus signatus*.

annulated with fuscous; pronotum coarsely punctate, its

Head, pronotum, and scutellum very pale ochraceous; eyes, a central basal fascia to head and the punctures to the pronotum brown; antennæ brown, annulated with stramineous; scutellum with two large discal oblong black spots; corium dark fuscous-brown, some blackish spots and suffusions on clavus; the lateral areas and cuneus pale semi-hyaline, with transverse fuscous fasciate spots, cuneus with the apex and transverse discal spot pale fuscous; membrane very pale fuliginous, piceous at base, the margins paler; legs pale ochraceous,