

pilose; a flavescent spot

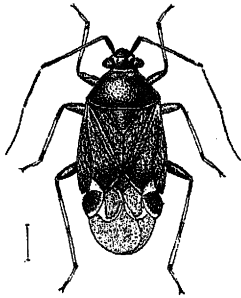


Fig. 294.

Pæciloscytus longicornis.

on apical margin of corium in front of cuneus, and the apex of cuneus also flavescent; antennæ long, first joint black, second about as long as posterior margin of pronotum, testaceous, with its apex black, third and fourth black, base of third flavescent; pronotum and scutellum rugulose; tibiæ pale ochraceous, their bases and apices and a central annulation to posterior pair black; membrane fuliginous, the basal cells a little darker with their margins flavescent.

Length $3\frac{2}{3}$ to 5 millim.

Hab. Calcutta (*Brit. Mus.*). Ceylon (*Green*). Nicobar Islands; Teressa (*vide Reuter*).—Tonkin.

1427. *Pæciloscytus consanguineus*, sp. n.

Allied to *P. longicornis*, Reut., but differing in being less greyishly pilose above; basal margin of pronotum, apex of scutellum, a small spot at apex of clavus, and basal angle of corium (somewhat broadly) ochraceous; femora pale ochraceous, their apical halves broadly annulated with castaneous; pronotum a little more convex and more deflected anteriorly; scutellum more tumid and distinctly transversely striate.

Length $3\frac{1}{2}$ millim.

Hab. Burma; Bhamo. Tenasserim; Myitta (*Doherty*).

1428. *Pæciloscytus pygmæus*, sp. n.

Black, hemelytra greyishly pilose; posterior margin of pronotum in front of base of corium, a small spot near base of lateral margin to corium, its inner margin beyond clavus (narrowly), and its apical margin before cuneus (broadly) ochraceous; apex of cuneus pale hyaline; membrane fuliginous, its basal cells piceous and margined with flavescent; antennæ piceous, basal half of second joint ochraceous; rostrum greyish-white, medially annulated with piceous, and reaching the posterior coxæ; legs piceous, femora broadly annulated near base with greyish-white, the apical halves of tibiæ, and tarsi excluding apices, greyish-white or very pale stramineous, apices of femora imperfectly annulated with brownish-ochraceous; pronotum, scutellum, and clavus very distinctly punctate.

Length $2\frac{2}{3}$ to 3 millim.

Hab. Ceylon; Peradeniya (*Green*).

1429. *Pæciloscytus capitatus*, sp. n.

♀. Piceous, greyishly pilose; head, antennæ, rostrum, posterior margin of pronotum, posterior lateral margin (narrowly) and