

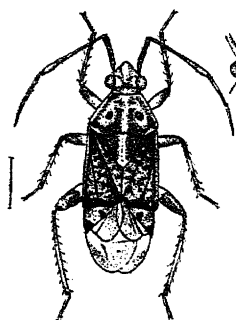
1408. *Paracalocoris burmanicus*, sp. n.

Fig. 290.

*Paracalocoris burmanicus*.

Head, pronotum, and scutellum ochraceous; head suffused with brownish on the lateral areas; pronotum with two central and two sublateral fuscous fasciæ united at base, and with two small transverse spots near anterior margin and two rounded discal spots black; scutellum with a broad fuscous fascia on each lateral area; corium fuscous, thickly ochraceously pubescent; cuneus castaneous, its apex and a spot near inner angle black; membrane pale fuliginous and subhyaline, the venation and some apical linear marks black; body beneath ochraceous; a central and lateral spots to mesosternum and a sublateral series of small spots to abdomen black; femora ochraceous, with their apices broadly black; tibiæ and tarsi black, the first with a central ochraceous annulation; antennæ piceous, extreme base of second joint and bases of third and fourth joints stramineous.

Length 6 millim.

*Hab.* Burma; Karennee (*Fea*).1409. *Paracalocoris erebus*, sp. n.

Black, opaque, finely ochraceously pubescent; head with a small black spot in front of eyes, which are greyish-white; pronotum with two transverse black spots on anterior area and two obscure spots on disk; cuneus castaneous, its base and apex black; membrane subhyaline, its venation and a linear subapical spot black, its apical margin fuliginous; body beneath brownish-ochraceous, sternum piceous; a lateral spot to mesosternum and a sublateral series of small spots to abdomen black; legs black, bases of femora and central annulation to tibiæ stramineous; antennæ piceous, base of third joint stramineous.

Length  $4\frac{1}{2}$  millim.*Hab.* Burma; near Rangoon.1410. *Paracalocoris lanarius*, sp. n.

Dull pale ochraceous, greyishly pilose; antennæ, eyes, two discal spots to pronotum, a small spot at each basal angle of scutellum, and small spots at base and apex of cuneus black; basal half of second joint of antennæ and third joint (excluding base) purplish-red, extreme base of second and base of third joint greyish-white; head and collar of pronotum uniformly greyishly pilose; pronotum greyishly pilose, with two central curved fuscous fasciæ; scutellum