

of pronotum, and scutellum ochraceous or stramineous; lateral margins of scutellum black; corium dull ochraceous or stramineous, basal and apical areas piceous; cuneus stramineous; membrane pale fuliginous; body beneath and legs ochraceous or stramineous, apices of posterior femora blackish; antennæ and legs longly pilose, extreme base of first joint of antennæ luteous.

Var. *a*. Sternum, apex of abdomen, bases and apices of posterior femora, posterior tibiæ and the tarsi black.

Length $6\frac{1}{2}$ to $8\frac{1}{2}$ millim.

Hab. Ceylon; Pundaluoya (*Green*). Tenasserim; Myitta (*Doherty*).

Punctures leaves of *Mesa indica* (*Green*).

Genus **MALALASTA**, nov.

Type, *M. superba*, Dist.

Distribution. Tenasserim.

Body elongate; head subglobose, vertically deflected in front; eyes of moderate size, almost touching anterior margin of pronotum; antennæ inserted in front of anterior margins of eyes, first joint about as long as head and pronotum together, slightly thickened at apex, second joint about half as long again as first; rostrum reaching the intermediate coxæ; pronotum with an anterior collar, behind which are two transverse callosities centrally united, posterior area strongly punctate, with a faint central longitudinal ridge; scutellum rather large, subtriangular, its apex broad; hemelytra subhyaline; legs somewhat long and slender; cuneus long and slender.

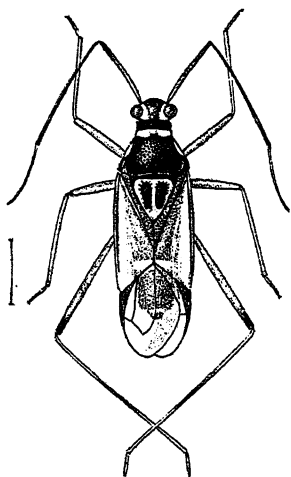


Fig. 287.—*Malalasta superba*.

1403. *Malalasta superba*, sp. n.

Head, pronotum, and scutellum black; an elongate spot at inner margin of each eye, the transverse callosity and an elongate spot on the lateral margins of pronotum, margins, a central fascia and apex of scutellum, head beneath (excluding a central black fascia), acetabula, coxæ, legs, and abdomen beneath stramineous or very pale ochraceous; abdomen with black transverse spots on each side, anterior margin of penultimate segment and some apical spots black; apices of posterior femora, extreme bases and a central annulation to posterior tibiæ, the antennæ, and venation to hemelytra fuscous-brown; extreme base of first joint of antennæ and third joint (excluding apex) stramineous; pronotum