

collar, transversely constricted before middle and enclosing two transverse callosities, posterior area tumid, coarsely punctate, the basal margin concavely sinuate, the lateral posterior angles subnodulose; scutellum subtriangular, a little tumid; hemelytra moderately concavely amplified, cuneus longer than broad, the fracture distinct; legs of moderate length.

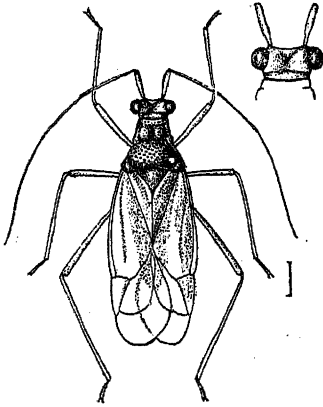


Fig. 282.—*Prodomus subflavus*.

1386. *Prodomus subflavus*, sp. n.

Head, pronotum, scutellum, clavus, and body beneath pale ochraceous; corium, legs, and antennæ pale stramineous; apex of second joint of antennæ piceous; membrane pale hyaline; pronotum, excluding the nodulosity and anterior collar, coarsely punctate; scutellum and clavus punctate.

Length  $4\frac{1}{2}$  millim.

*Hab.* Ceylon; Peradeniya (Green).

1387. *Prodomus clypeatus*, sp. n.

Stramineous; apex of second joint of antennæ piceous; eyes and scutellum, excluding basal margin, black, inner margin of clavus ochraceous; corium finely and obscurely pilose.

Allied to *P. subflavus*, but differing by the black and shining scutellum, and otherwise by the uniform pale stramineous coloration.

Length 5 millim.

*Hab.* Tenasserim; Myitta (Doherty).

1388. *Prodomus subviridis*, sp. n.

Very pale greyish-green; a black spot on abdomen above near apex of scutellum, imperfectly seen through the pale hemelytra; apex of second joint of antennæ brown; eyes piceous; body above finely and obscurely greyishly pilose.

Length 4 millim.

*Hab.* Tenasserim; Myitta (Doherty).

Genus **ANGERIANUS**, nov.

Type, *A. fractus*, Dist.

*Distribution.* Tenasserim.

Subovately elongated; head very broad between eyes, anteriorly perpendicularly deflected, medially longitudinally impressed,