

Var. Antennæ fuscous-brown, apices of first and second joints piceous; posterior area of pronotum brownish-ochraceous, not black.

Length $4\frac{1}{2}$ to 5 millim.

Hab. Ceylon (*Green, Brit. Mus.*).

Genus **GUISARDUS**, nov.

Type, *G. pellucidus*, Dist.

Distribution. Tenasserim.

Subelongate; head broad, perpendicularly deflected in front of eyes, centrally medially depressed and shortly finely longitudinally sulcate; eyes large, prominent, well separated from anterior margin of pronotum; antennæ with the first joint longer than head and distinctly globosely incrassated at its base, second joint about twice as long as first; rostrum reaching the intermediate coxæ; pronotum longer than broad, doubly constricted on anterior area, with two central discal curved carinæ, the lateral posterior angles nodulose, the basal margin concavely sinuate; scutellum a little tumid, centrally linearly impressed; hemelytra subhyaline, cuneus longer than broad.

1385. *Guisardus pellucidus*, sp. n.

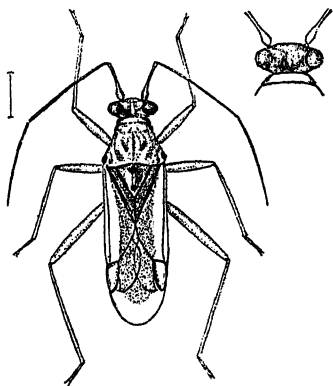


Fig. 281.—*Guisardus pellucidus*.

Head, pronotum, scutellum, body beneath and legs very pale ochraceous; antennæ (excluding basal joint), eyes, lateral margins and posterior lateral angles of pronotum, and a central basal spot and apex to scutellum black; apical margin of corium, margins of cuneus, and veins to membrane piceous; posterior area of pronotum tumid, transversely rugulose striate and centrally longitudinally incised on disk; clavus moderately infuscated.

Length 6 millim.

Hab. Tenasserim; Myitta (*Doherty*).

Genus **PRODROMUS**, nov.

Type, *P. subflavus*, Dist.

Distribution. Ceylon and Tenasserim.

Elongately subovate; head broad, medially depressed and centrally longitudinally impressed, eyes prominent and well separated from anterior margin of pronotum; antennæ with the first joint a little longer than head, second about half as long again as first; rostrum passing the intermediate coxæ; pronotum with a narrow anterior