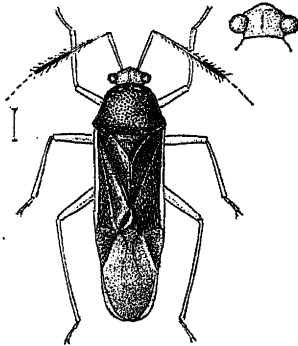


Genus **COMBALUS**, nov.Type, *C. novitius*, Dist.*Distribution.* Assam.

Body elongate; head short, broad, deflected anteriorly, with a distinct central longitudinal impression; eyes somewhat small, contiguous to the anterior margin of the pronotum; antennæ with the first joint long, a little shorter than the pronotum, second about twice as long as first and strongly setose (remaining joints mutilated in specimen described); rostrum passing the anterior coxæ; pronotum longer than half the width at base, coarsely punctate, with a very narrow anterior collar, behind which are two transverse callosities, lateral margins slightly sinuate; scutellum transversely foveate at base, glabrous, apex acute; corium smooth, shining, with a distinct impunctate margin, margins subparallel; a distinct foveation beyond apex of clavus, cuneus longer than broad, fracture indistinct; legs moderately short, femora not prominently incrassate.

1379. *Combalus novitius*, sp. n.Fig. 276.--*Combalus novitius*.

Black, shining; head, antennæ, rostrum, coxæ, legs, lateral margins of corium, and apparently (as seen in carded specimen) disk of abdomen beneath ochraceous; apex of second joint of antennæ broadly black; head glabrous; pronotum coarsely punctate and subrugulose; scutellum very faintly transversely striate; corium pilose and very obsoletely punctate; cuneus castaneous; membrane shining fuliginous-brown.

Length $4\frac{1}{2}$ millim.*Hab.* Assam; Margherita.Genus **DIOGNETUS**, nov.Type, *D. intonsus*, Dist.*Distribution.* Ceylon.

Somewhat broadly ovate, thickly pilose; head moderately deflected, with a deep, broad, longitudinal incision between eyes, which are broadly transverse, inwardly touching the anterior margin of the pronotum, but extending far beyond it; antennæ moderately slender, basal joint very slightly thickened, about as long as head, second joint a little more than twice as long as first, rostrum reaching the intermediate coxæ; pronotum punctate, the basal margin about three times the width of anterior margin,