

1377. *Megacelum picturatum*, sp. n.

Head and pronotum ochraceous; eyes, lateral and subanterior and subbasal margins to pronotum black, anterior and basal margins to pronotum luteous, a subquadrate fuscous spot on each side of pronotal anterior area; scutellum luteous, its apex red; corium pale greyish-ochraceous, clavus and an irregular central transverse fascia fuscous, cuneus reddish; membrane pale fuliginous; legs luteous, apical halves of femora and the tarsi testaceous, apices of tarsi piceous; first joint of antennæ testaceous, second joint luteous with its apex testaceous (remaining joints mutilated in specimen described); head with a distinct narrow central longitudinal sulcation; pronotum obscurely punctate.

Length 7 millim.

Hab. Upper Burma; Goteik Gorge (*Bingham, Brit. Mus.*).

Genus **TANCREDUS**, nov.

Type, *T. sandaracatus*, Dist.

Distribution. Ceylon.

Subelongate; head with a distinct central longitudinal impression on its basal half, the eyes prominent and touching the anterior margin of the pronotum; antennæ with the first joint slightly thickened and about as long as the head, second joint about three times as long as the first, third about half as long as second; rostrum reaching the apices of the intermediate coxæ; pronotum punctate, broader than long, with a distinct but very narrow anterior collar, an obscure transverse constriction at about one-third from anterior margin, the lateral posterior angles distinctly prominent and subacute; scutellum subtriangular; corium with cuneus a little shorter than abdomen, clavus punctate and transversely striate; tibiæ setose.

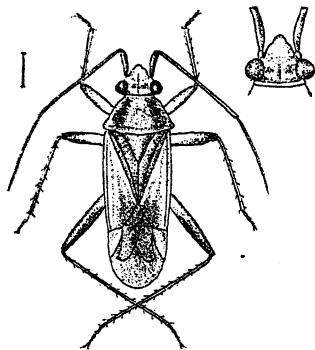


Fig. 275.—*Tancredus sandaracatus*.

1378. *Tancredus sandaracatus*, sp. n.

Pale stramineous; antennæ, inner margins of eyes, a broad oblique fascia on each lateral area of pronotum, clavus (excluding inner margin), apical area of corium, abdomen beneath, posterior femora (excluding base), apices of anterior and intermediate

femora, and apices of posterior tibiæ sanguineous; tarsi infuscated; membrane very pale fuliginous.

Length 4 millim.

Hab. Ceylon; Kalutara (*Green*).

Swept from grass (*F. E. Green*).