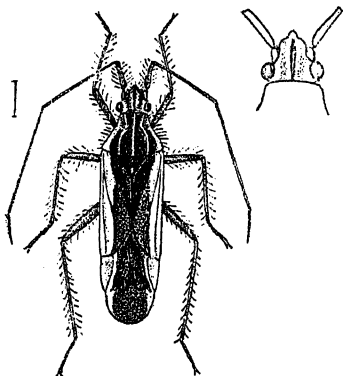


1369. *Matenesius marginatus*, sp. n.Fig. 272.—*Matenesius marginatus*.

Chocolate - brown ; head ochraceous ; three longitudinal discal lines to pronotum, lateral margins to pronotum and hemelytra (the last broad), and narrow lateral margins to sternum and hemelytra beneath stramineous ; scutellum and clavus (excluding apex) black ; disk of membrane pale fuscous ; body beneath and legs ochraceous ; legs longly pilose.

Length $4\frac{1}{2}$ millim.

Hab. Ceylon ; Pundaluoya (Green). Burma ; Karennee (Fea). Tenasserim ; Myitta (Doherty).

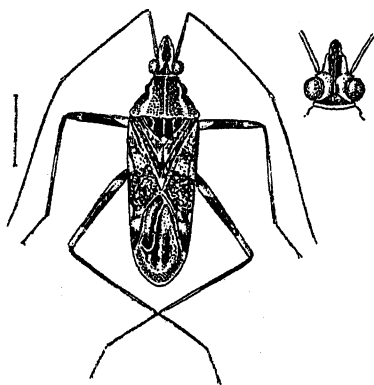
Genus **RHINOMIRIS**.

Rhinomiris, Kirk. *Tr. E. S.* 1902, p. 268.

Type, *R. vicarius*, Walk.

Distribution. Oriental Region.

Head subhorizontal, produced triangularly in front of eyes, which are large and almost touch the anterior margin of the pronotum, disk distinctly longitudinally sulcate between eyes ; antennæ long, nearly as long as body, first joint about as long as head and considerably passing its apex ; rostrum very long, passing posterior coxæ ; pronotum finely rugulose, almost medially constricted, the anterior area laterally rounded, moderately gibbous on disk, and with a central impressed line, posterior area laterally obliquely widened to posterior angles, the basal margin moderately sinuate ; scutellum somewhat tumid ; legs moderately long and slender.

Fig. 273.—*Rhinomiris vicarius*.1370. *Rhinomiris vicarius*,

Walk. (*Capsus*) *Cat.*

Het. vi, p. 121 (1873) ;

Kirk. Tr. E. S. 1902,

p. 269.

Capsus canescens, Walk.

Cat. Het. vi, p. 121

(1873).

Head and pronotum ochraceous ; head with a central anterior fascia and the eyes piceous ; pronotum with four broad longitudinal fasciæ, two central and one at each lateral margin, piceous ; scutellum ochraceous,