

1360. *Clapmarius turgidus*, sp. n.

Above very dark castaneous, lateral margins of corium (widened posteriorly) and the cuneus paler; antennæ very pale castaneous, the second joint and rostrum ochraceous; membrane fuliginous; pronotum rugulose; scutellum finely transversely striate; hemelytra obscurely pubescent; legs mutilated in typical specimen.

Length 4 millim.

Hab. Ceylon; Yatiyantota (*Green*).

Genus **MYSTILUS**, nov.

Type, *M. priamus*, Dist.

Distribution. Tenasserim.

Subelongate; head broad, deeply centrally, longitudinally sulcate,

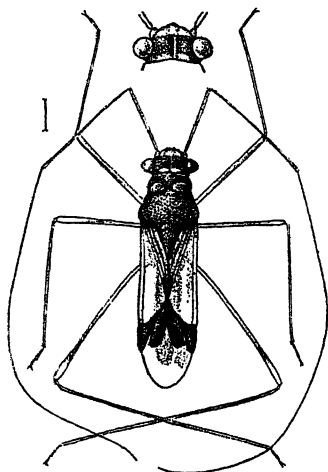


Fig. 268.—*Mystilus priamus*.

somewhat convexly produced in front of eyes, which touch the anterior margin of the pronotum, but project beyond it: antennæ very much longer than the body, with the first joint almost as long as the head and pronotum together, remaining joints very slender; rostrum considerably passing the posterior coxæ; pronotum subquadrate, a little narrowed anteriorly, very coarsely punctate or subrugulose, constricted at about one-third from anterior margin, where there are two rounded callosities; scutellum moderately tumid; hemelytra hyaline, lateral margins slightly sinuate; legs very long, posterior tibiæ very much longer than the femora; cuneus a little longer than broad.

1361. *Mystilus priamus*, sp. n.

Head, antennæ, pronotum, and scutellum black, opaque; hemelytra pale greyish hyaline; base and apex of clavus, apical margin of corium, cuneus, and basal cell to membrane dark fuscous-brown; rostrum and legs brownish-ochraceous, bases of femora and apices of tibiæ luteous; sternum piceous, abdomen beneath ochraceous, with its apical area and upper surface piceous; base of first joint of antennæ, apex of head, and two spots between the eyes ochraceous.

Length 4 millim.

Hab. Tenasserim; Myitta (*Doherty*).