

reddish; head and pronotum with longitudinal reddish or brownish stripes; pronotum with the posterior lobe thickly transversely striate; scutellum brownish, with three pale longitudinal lines, one central, the others on lateral margins; hemelytra pale subhyaline, the clavus, subclaval area, and lateral margins ochraceous; cuneus and veins to membrane reddish; antennæ with the first and second joints ochraceous with fuscous speckles, second joint with apex reddish, remaining joints fuscous, third luteous at base; legs more or less speckled with dull reddish, especially on posterior femora.

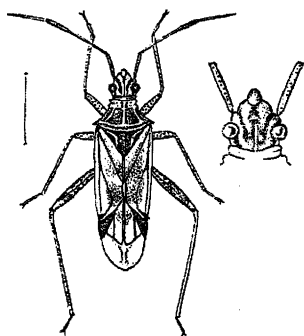


Fig. 263.—*Isabellina ravana*.

Length 7 to 8 millim.

Hab. Ceylon; Pundaluoya (*Green*). Burma; Karennee.

Genus **ONOMAUS**, nov.

Type, *O. pompeus*, Dist.

Distribution. Assam, Burma.

Subelongate; head moderately large and tumid above, strongly perpendicularly deflected in front of antennæ, distinctly centrally sulcated, eyes well separated from anterior margin of the pronotum; antennæ a little shorter than the body, first joint a little longer than head and anterior area of pronotum together, second joint longest, slightly longer than third; rostrum reaching posterior coxæ, first joint about as long as head; pronotum subtriangular, narrowed anteriorly, with a very narrow anterior collar and somewhat obscurely constricted at about one-third from anterior margin, posterior margin upwardly curved at lateral angles, which are subprominent; scutellum tumid; hemelytra with the lateral margins a little sinuate; corium with cuneus about as long as abdomen; membrane with an elongate, basal, subquadrate cell; legs long, tibiæ longer than femora, posterior tibiæ half as long again as femora; cuneus longer than broad.

1357. *Onomaus pompeus*, sp. n.

Head ochraceous, its apex, basal margin, central sulcation, and the antennæ piceous, basal half of third joint of antennæ luteous; pronotum dark chocolate-brown, the narrow anterior collar, anterior area, and a central longitudinal line to posterior area luteous, a central piceous spot on anterior luteous area; scutellum pale virescent, its basal and lateral margins, central line and apex piceous;