

Key to Species of Pantilioforma, Schum.

1. Scutellum forming an equilateral triangle.....2
Scutellum much longer than wide at base.....*P. thoracicus*, Dist. Belgian Congo
2. Pronotum anteriorly only one-third as wide as posteriorly between humeral angles.....*P. modestus*, Dist. Belgian Congo
Pronotum anteriorly about one-half as wide as posteriorly between humeral angles (fig. 1) *P. impressopunctata*, Schum. Spanish Guinea and Sierra Leone
Mr. H. E. Box has collected *P. modestus*, Dist., on *Mitragyna stipulosa* at Tafo in the Gold Coast (December, 1942).

Chamus, Distant.

Distant 1904, Ann. Mag. nat. Hist., (7) 13, p. 197.

Type: *C. wealei*, Dist. 1904.**Chamus boxi**, sp. nov. (fig. 9).

Colour ♂ and ♀.—Yellowish brown, darker brown on head and anteriorly on sides of pronotum; first antennal segment fulvous brown, apex of second, whole of the third and fourth segments reddish fulvous; hairs on first segment, black; outer half of cuneus pale yellow, translucent; inner margin of cuneus narrowly and membranal vein bright red; membrane dark brown with two pallid areas one on each side extending from half way up inner side of cuneus to mid-way between apex of cuneus and apex of membrane. Legs yellow, the extreme apices of tarsi and tarsal claws red. Pubescence golden yellow.

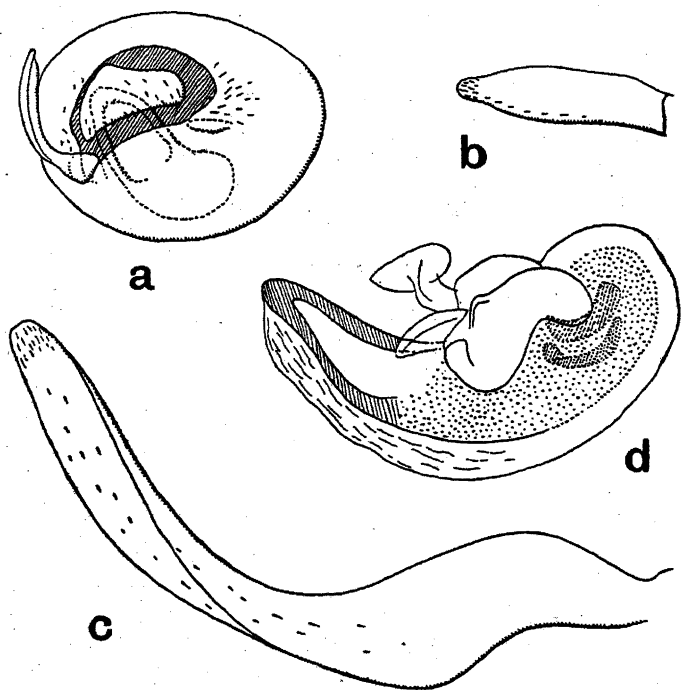


Fig. 9. *Chamus boxi*, sp. nov.: a, terminal view of male pygophor and genitalia, the aedeagus shown in dotted outline; b, right paramere (dissected and mounted); c, left paramere (dissected and mounted); d, aedeagus seen from side (dissected and mounted). Different magnifications.