

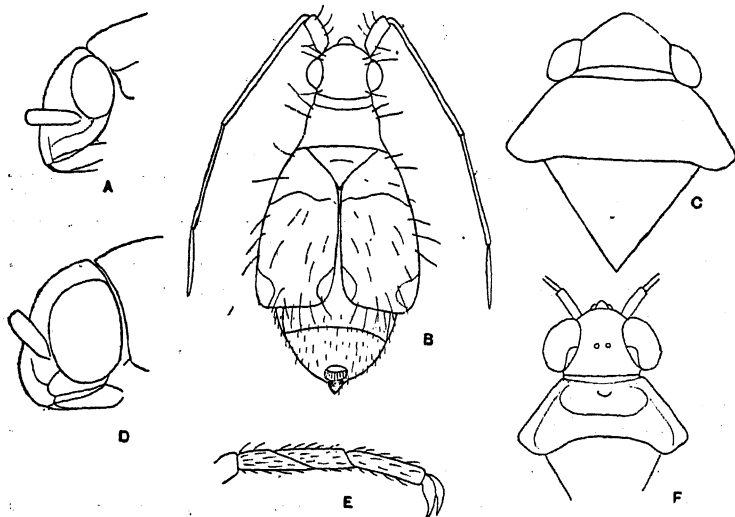
and cuneus are mutilated. In all the specimens from Rodriguez, the extreme outer apex of the corium and the extreme apex of the cuneus are dark.

Division SYSTELLONOTARIA.

42. *Chatocapsus scotti*, sp. n. (Fig. 3, B.)

♀. *Head* dark chocolate-brown, very finely granulate, not at all shining, with several long erect bristle-like hairs; vertex and frons strongly convex, clypeus at its apex with a few short pale hairs, moderately strongly prominent, distinctly

Fig. 3.



- A. *Trevesa albidopicta*, sp. n., side view of head; C. Head and pronotum of same; E. Hind tarsus of same. B. *Chatocapsus scotti*, sp. n. D. *Campylomma selecta*, sp. n., side view of head. F. *Acanthia subcarinata*, sp. n., head and pronotum.

separated from the frons, the anterior surface of which forms an obtuse angle with it; eyes rather small, widely separated, granulate, with a few short erect hairs, the posterior margins touching the anterior margin of the pronotal collar*; base of the head including eyes a little narrower than the posterior margin of the pronotum; antennæ long, placed slightly below the anterior apices of the eyes, basal joint ochraceous

* In the type-specimen the head is slightly protruding and consequently the eyes do not touch the pronotum.