

*A new Species of Miridæ from the South-east Pacific.*

By L. EVELYN CHEESMAN, F.E.S., F.Z.S.

*Cyrtorrhinus riveti*, sp. n.

♂. Shining black; sparsely and irregularly covered with long, whitish, subdepressed hairs, less sparsely on the hemelytra. A large spot on each side of the vertex touching the inner margin of the eyes; antenniferous tubercles, margins of bucculæ, extreme base and apex of first antennal segment, rostrum, hemelytra, a broad longitudinal fascia in the centre of the abdomen reaching to the base of the sixth apparent segment, and legs creamy-white. Apices of femora, tibiæ, and tarsi suffused with pale creamy-brown. Abdomen laterally and apically castaneous.

Head seen from above much broader than long; seen from the side, height at the base equal to the length. Antennæ clothed in short light brown pilosity; first segment reaching for half its length beyond the apex of the head; length of segments beginning with the first 18-54: (65=1 mm.), apical segments missing. Rostrum reaching the apex of the posterior coxæ. Pronotum transverse; length just over two-fifths of the breadth at the base, which is almost twice the

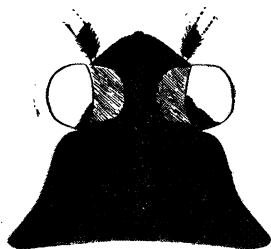
breadth at the apical margin (see fig.); disc flat, with indistinct calli anteriorly.

Length 2 mm., breadth 0·8 mm.

♀. Similar in coloration.

Length of antennal segments 18-50-38-33 (65=1 mm.).

1 ♂, 1 ♀, B.M. Coll. Tahiti, Society Islands, April 1925 (L. E. Cheesman). Taken among *Tradescantia* at the borders of streams, sea-level.



*Cyrtorrhinus riveti*, sp. n.

Closely allied to *C. parviceps*, Reuter, but a more slender and elongate species, the pronotum entirely black, the relative lengths of first and second segments different (14-43 in *C. parviceps*).

I have the honour of dedicating this charming little Capsid to Monsieur Rivet, Governor of the French Possessions in the Pacific.