

a group of setae dorsally, opposite to the curvature where it shows a swollen portion.

*Female*: Identical to male in colour and dimensions.

*Holotype*: Male, Ibarre, Ecuador, Febr. 13, 1937, SW. Frost Col. in the Collection of the U.S. National Museum. *Allotype*, a female, same data as type.

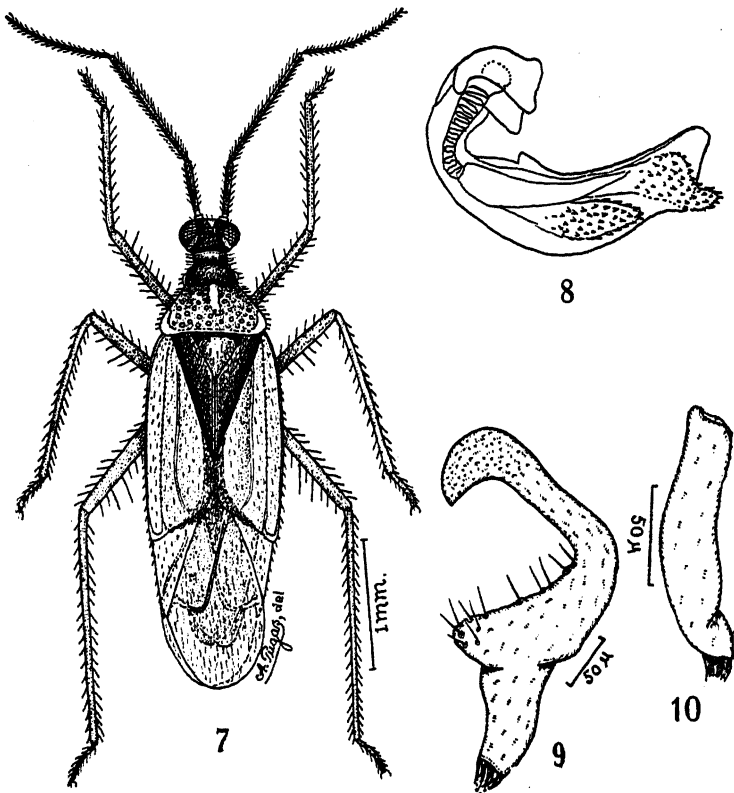
This species is nearer to *Falconia caduca* Distant, from which it differs by the colour, structure of the hemielytra, pronotum and male genitalia.

✓ *Hyaliodes roraimensis* n. sp.

(Figs. 7-10)

Characterized by its colour and structure of male genitalia.

*Male*: Length 5.5 mm, width 1.6 mm. *Head*: Length 0.3 mm, width 0.7 mm, vertex 0.30 mm. *Antennae*: Segment I, length 0.9 mm; II, 1.4 mm; III, 0.6 mm; IV, 0.6 mm. *Pronotum*: Length 0.8 mm, width at base 1.1 mm. *Rostrum*: Length 1.2 mm.



*Hyaliodes roraimensis* n. sp. — Fig. 7: Male; fig. 8: aedeagus; fig. 9: left clasper; fig. 10: right clasper.