

*Colour*: Black; first antennal segment, base of second segment, third segment towards base, rostrum, testaceous.

Body dense, long and erectly pilose, the hairs with a golden tinge. Scutellum strongly convex, with a blunt elevation in middle, rostrum reaching the base of middle coxae. Posterior and median tibiae a little flattened, second antennal segment gradually incrassate towards the apex.

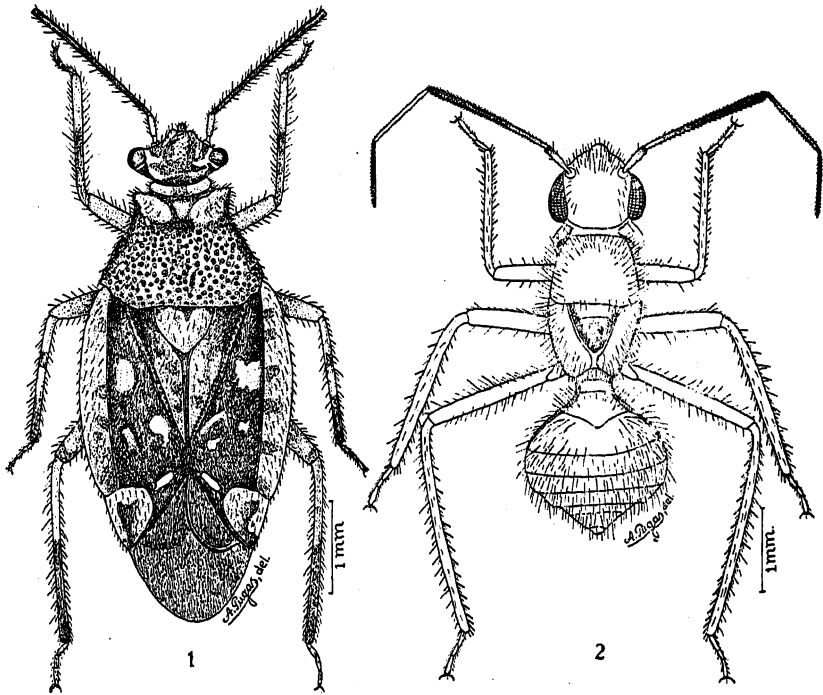


Fig. 1 — *Peruanocoris tuberculatus* n. g., n. sp.. Fig. 2 — *Guarania brasiliiana* n. sp.

*Male*: Unknown.

*Holotype*: Female, Campos de Jordão, Est. de São Paulo, Brasil, 1.600 mts. 3.1945, Wygodzinsky leg. in the collection of the Author.

This species differs from *Guarania myrmecomorpha* Carvalho & China, 1951 by the longer rostrum (reaching middle coxae), scutellum with a blunt elevation (not spiniform as in *myrmecomorpha*) and the coxae not visible from above.

✓ *Falconia andina* n.sp.

(Figs. 3-6)

Characterized by its colour, male genitalia and shape of pronotum.

*Male*: Length 3.7 mm, width 0.6 mm. *Head*: Length 0.2 mm, width 0.4 mm, vertex 0.20 mm. *Antennae*: Segment I, length 0.4 mm; II, 0.8 mm; III,