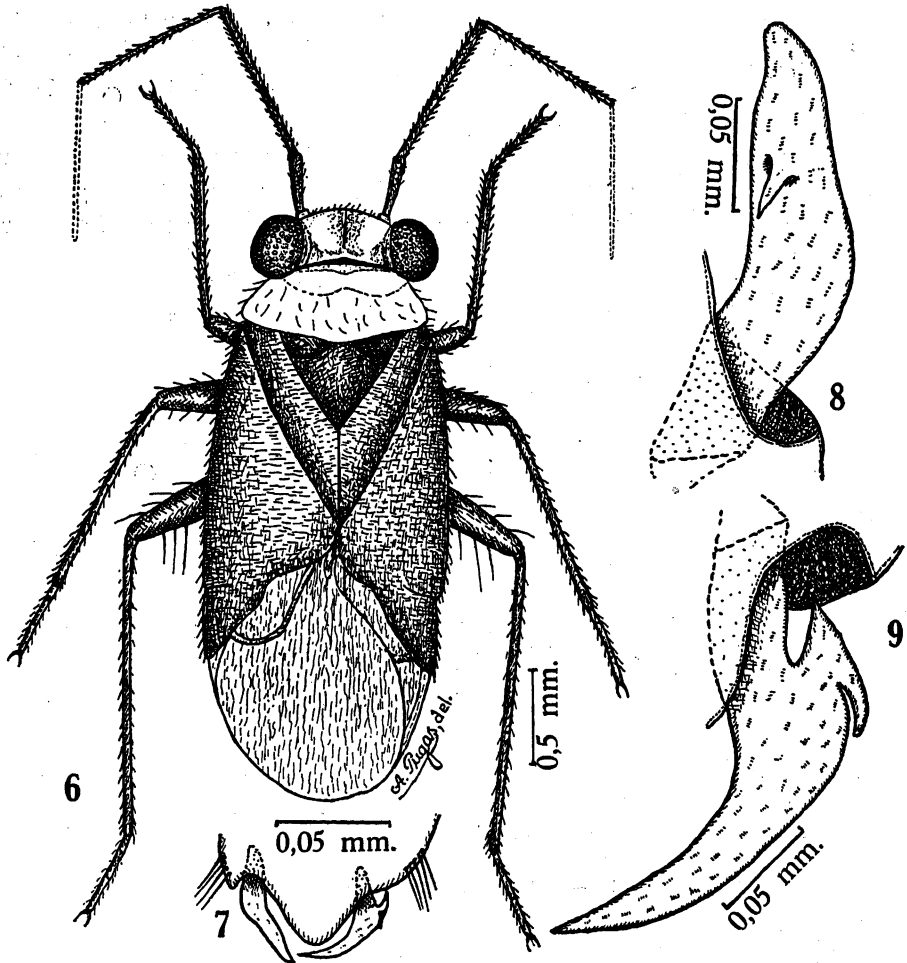


Right clasper (fig. 8) simple, with an erect spine-like tubercle. Abdominal extremity as seen in figure 7.

*Holotype*: Male, British Honduras, Ponta Gorda, Oct. 1935, J. J. White, B.M.1937 147, in the Collection of the British Museum of Natural History.



*Cylapoides bicolor* n.g., n.sp. — Fig. 6: Male; fig. 7: abdominal extremity; fig. 8: right clasper; fig. 9: left clasper.

*Cylapoides unicolor* n.sp.

(Fig. 10)

Characterized by its colour and dimensions.

*Female*: Length 3.2 mm.; width 1.5 mm. *Head*: length 0.3 mm., width 1.1 mm., vertex 0.55 mm. *Antennae*: segment I, length 0.3 mm.; II, 0.9 mm.; III: 1.2 mm.; IV: 0.7 mm. *Pronotum*: Length 0.4 mm., width at base 1.1 mm. *Rostrum*: Length 1.7 mm.