

where one can collect a large number of ants and also other myrmecomorphic species of mirids and coreids.

*Amazonocoris* n. g.

*Phylinae, Hallodapini*, characterized by the large size of eyes which reach the gula inferiorly and are pilose, antennae with segments robust with approximate same thickness, long and erect pubescence of body.

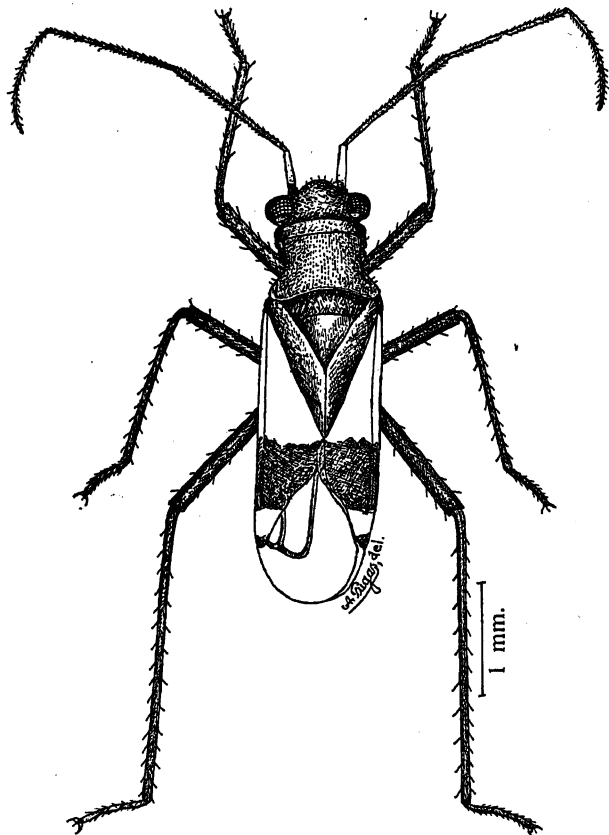


Fig. 1 — *Kamaiurana xinguensis* n. g., n. sp., female.

Body elongate, covered by very long, espase and erect pubescence. Head with a very narrow vertex, smooth posteriorly; eyes very large, strongly granulose and pilose, removed from pronotum by a short distance, reaching the gula below; seen from front the head is roundish, the internal margin of eye strongly sinuate near antennal insertion; seen from the side, the eyes occupy the whole lateral portion of head. (except jugum, lorum, clypeus and buccula), narrowing towards the gula; clypeus not prominent, rostrum reaching the base of posterior coxae.