

(fig. 4) with a short apical process, without basal tooth. Arolia small, united to basal third of claw.

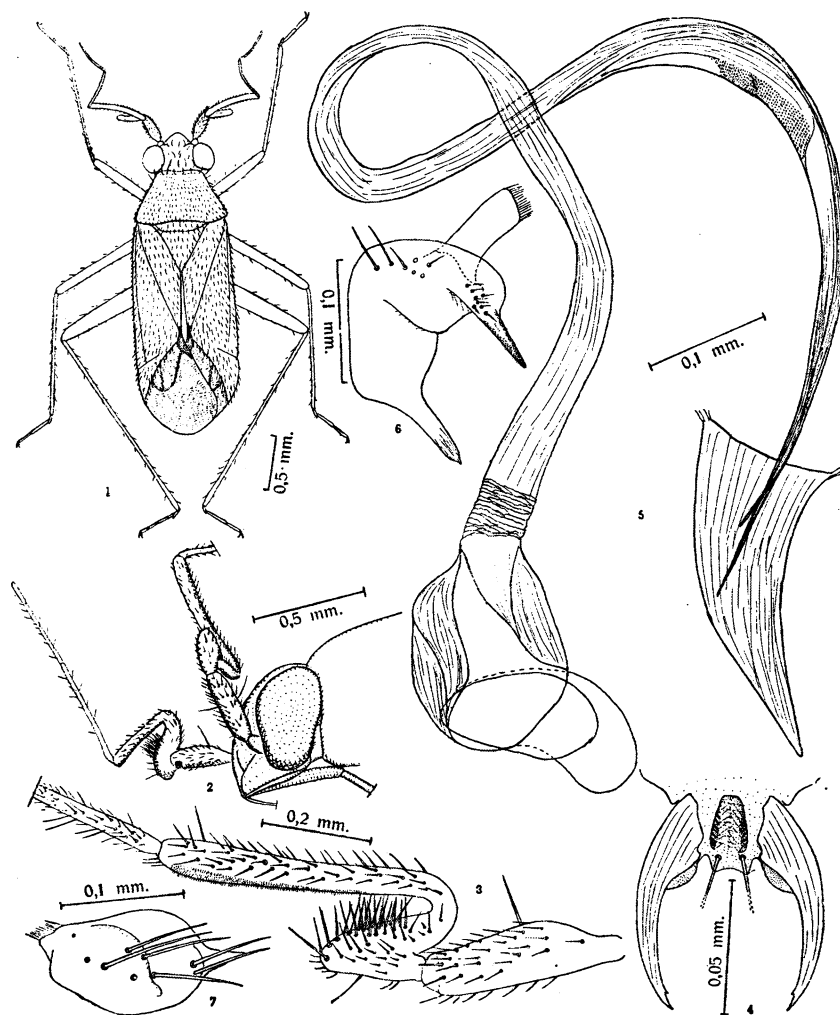
Geographical distribution: Neotropical region, Dutch Guiana.

Genotype: *Anomalocornis geijskesi* n. sp.

Genus belonging to subfamily *Phyllinae*, well differentiated from all others by characteristic shape of antennae, length of rostrum and legs.

*Anomalocornis geijskesi* n. sp.

Well characterised by the peculiar shape of second antennal segment, color of body and male genitalia. General aspect as in fig. 1.



*Anomalocornis geijskesi* n. g., n. sp. — Fig. 1: Male, general aspect; fig. 2: head with antennae, lateral view; fig. 3: right antenna, first, second, and base of third article; fig. 4: praetarsus and claws; fig. 5: phallus; fig. 6: left harpagone; fig. 7: right harpagone.