

General coloration black metallic with reddish lutescent areas; head, anterior half of pronotum, a wide transversal fascia on corium (between apex of scutellum and apex of clavus) reddish lutescent, hind portion of pronotum, base (up to level of apex of scutellum) and apical portion (beyond apex of clavus) of corium black metallic, membrane fuscous at the intrareolar portion, pale beyond apex of cuneus.

Underside of body with apex of clypeus, base of rostrum, meso and metapleurae and coxae black, first coxae and legs lutescent, abdomen reddish lutescent.

Body glabrous, pronotum strongly constricted at middle, calli prominent, ocellate laterally, rostrum reaching the middle coxae, segment II of antenna incrassate on apical portion.

*Male*: unknown.

*Holotype*: female, Finschafen, NEW GUINEA, V.4.'44, E. S. Ross col., in the collection of the autor. *Paratypes*: 4 females: New Guinea, NE. E. Highlands, Purosa, 1700 m, 17-25. V.1966, Grssit & Tawi; Wau, Bulolo R. 850-950 m, 4.II.1966, J. Sedlacek; Papua, Owen Stanley Range, Goilala, Tapini, 975 m, XI.16-25.1957, W.W.Brandt; New Guinea Neth. Kulima, 1400 m, II.19-22.1960, T.C.Maa col., in the collection of the Bernice P. Bishop Museum and the author.

Differs from other species by the transverse fascia of the hemelytra.

#### *Imogen papuensis* n. sp.

(Fig. 6)

Characterized by its color and size.

*Female*: Length 6.4 mm, width 3.2 mm. *Head*: Length 0.6 mm, width 1.3 mm, vertex 0.72 mm. *Antenna*: Segment I, length 0.6 mm; II, 1.9 mm; III, 0.6 mm; IV; 0.6 mm. *Pronotum*: Length 1.4 mm, width at base 2.1 mm. *Cuneus*: Length 0.60 mm, width at base 0.60 mm (holotype).

General coloration black, shining, with lutescent areas; head and anterior half of pronotum lutescent, frons anteriorly, clypeus and spot on lorum black; antenna lutescent, apex of first segment, base and apical third of second segment fuscous to black, last two segments fuscous: eyes silvery (brown when alive?); membrane fuscous, apex pale.

Underside of body black, propleura superiorly, xyphus of prosternum and inferior side of head lutescent; abdomen black, reddish on apical third,

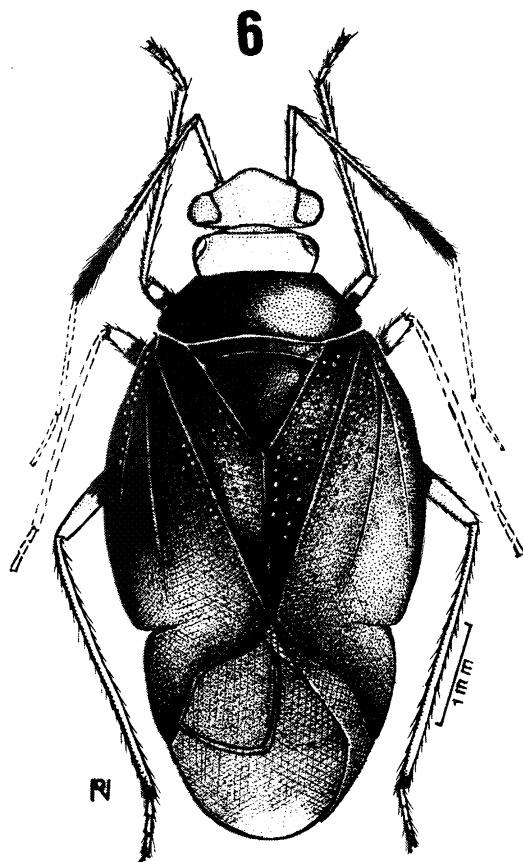


Fig. 6 - *Imogen papuensis* n. s., holotype.

coxae and basal half of femora black, apical portion and tibiae (except dark extreme end) and tarsi whitish.

Body glabrous, pronotum strongly constricted at anterior half, calli prominent, hemelytra noticeably rounded and punctate, membrane narrowed to apex, second antennal segment incrassate at apical portion, rostrum reaching middle coxae.

*Male*: Similar to female in color and size.

*Holotype*: Female, Mt. Lamington Distr., Northern Division, PAPUA, C. T. McNamara col., in the collection of the author. *Paratypes*: 3 males, Papua, Kokoda, Pitoki, 450 m, III.24.1956, J.L. Gressit; New Guinea NE, Wau, 1250m, 24.III.1966, J. Sedlacek; Garaina, 880 m, 13-15.I.1968, J. Sedlacek; 5 females, Garaina, Saureli, 9-1400 m, 5.I.1968, J. & M. Sedlacek; Busu River, 12 km, Sept.21, 1956, E. J. Ford; Kalalo, 750 m, 20-30.VIII.1966, O.R. Wilkes; Waris, s. of Hollandia, 450-500 m, VIII.1-18.1959, T.C. Maa, in the collections of the Bernice P. Bishop Museum and of the author.