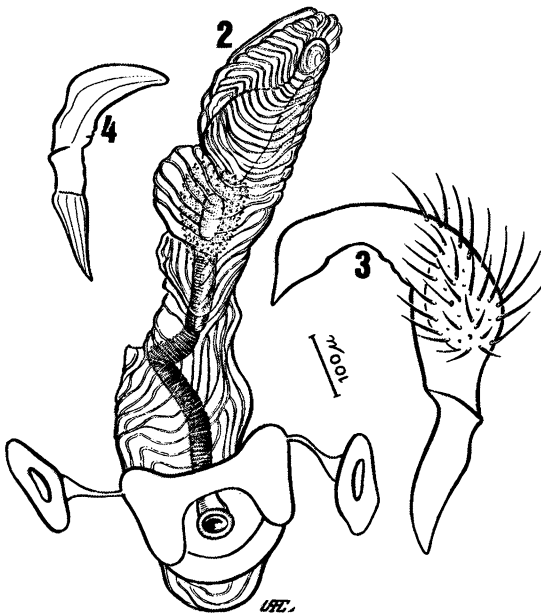


Fig. 1 - *Imogen bicolor* (Poppius), lectotype.



Imogen bicolor (Poppius): Fig. 2 - Penis; Fig. 3 - Left paramere; Fig. 4 - Right paramere.

Spec. Typ. n° 10021, 10023, 10024, 10022, Paralectotypes; 4 males, New Guinea, NE, Wau, 1200-1500 m, 30.VIII.1965, J. Sedlacek col.; New Guinea Papua, Owen Stanley Range, Goilala, Loloipa, XII. 21-31.1957, W. W. Brandt; 2 females, New Guinea, NE, Waris, s. of Hollandia, 450-500 m, VIII.1-7.1959, T. C. Maa; Madang District, Wanuma, 600-720 m, VIII.1968, N. L. H. Kraus.

This species was described by Poppius (1912) and included in the genus *Araspus* Distant, 1904. It differs from others by the color of the hemelytra and by the structure of male genitalia.

***Imogen fasciatus* n. sp.**

(Fig. 5)

Characterized by the transverse fascia of hemelytra.

Female: Length 5.8 mm, width 2.6 mm. *Head*: Length 0.3 mm, width 1.4 mm, vertex 0.72 mm. *Antenna*: Segment I, length 0.4 mm; II, 2.1 mm; III, 0.6 mm; IV, 0.6 mm. *Pronotum*: Length 1.2 mm, width at base 1.9 mm. *Cuneus*: length 0.72 mm, width at base 0.72 mm (holotype).

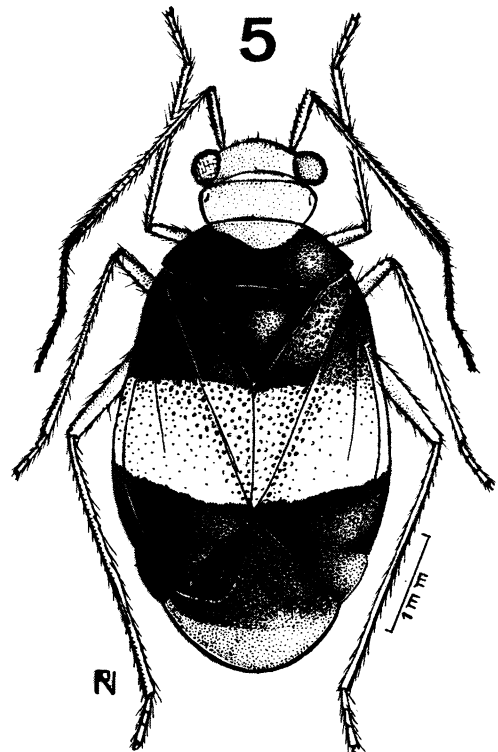


Fig. 5 *Imogen fasciatus* n. sp., holotype.